

New minister
at Christ Church

See below

A visit
to yesteryear

See page 3

Jen Citarella leads
track team to title

see sports page 12

Belleville Times

84th Year No. 5

An Orechio Publication

Serving Belleville Since 1909

Thursday, January 14, 1993

50¢

'Birthplace of American Industrial Revolution'

Roosevelt kin may join recognition effort; Rep. Klein calls Resolution 'Top Priority'

By Howard Klausner

Newly elected Representative Herb Klein (8th Dist.) has informed the Belleville Renaissance Committee that passage of a Resolution to have the President and the Congress recognize Belleville as Birthplace of the American Industrial Revolution is "one of my two top priorities."

He indicated he would move quickly to reintroduce the Resolution presented to the House by Representative Robert A. Roe, Klein's predecessor.

Lou Cienia, Chairman of the Renaissance Committee, said he had received word from the Congressman's office that Klein would press the effort at obtaining recognition of Belleville's role in American history.

The statement put to rest concerns that efforts to question the authenticity of Patriot Engineer Josiah Hornblower's role in bringing the Steam Age to the Western Hemisphere might deter the Congressman from backing the Resolution.

Belleville's claim to the title is based on the historic fact that Hornblower brought the first steam engine to America in 1753, setting it up in what is now Belleville to pump water out of the Schuyl-er Copper Mines.

Later, the first reciprocal chamber steam engine ever built in America was made in a Belleville foundry owned by Nicholas Roosevelt, who commissioned the engine to power America's first experimental steamboat.

The Polacca was launched from Belleville on Oct. 21, 1798, proceeding to Newark. The powerful engine proved too strong for the frame of the boat, which began to leak at the seams because of vibrations.

Roosevelt, great-uncle of Franklin D. Roosevelt and Theodore Roosevelt, resided in Belleville for many years, and acted in partnership with Hornblower in creating the steamboat, although he was the sole owner of the operation.

Cienia also received a telephone call from Duane Pierson, Superintendent of the Roosevelt and Vanderbilt Family National Historical Society in Hyde Park, N.Y., stating that "family members will gather within a few weeks and review the matter," referring to an invitation from the Committee to

help celebrate Nicholas Roosevelt's role in the creation of the Polacca.

Pierson stated, "The efforts on behalf of this community to preserve the historic culture of this country is to be applauded."

The Roosevelt family reported is very much aware of Nicholas Roosevelt's involvement in the development of steam power in America, and the steamboat in particular.

Cienia noted that the Soho Works, a foundry, was established in Belleville in 1793 by Roosevelt, who was superintendent of operations at the plant which built America's first modern steam engine.

"Some of the most prominent and powerful families in America were involved in Belleville's early

industrial history," Cienia said.

"With Nicholas Roosevelt and John Schuyler were members of the wealth Van Rensselaer family, the Livingstons - one of whom was the first Governor of the State of New Jersey - William Stephens, who found the copper wire factory and copper rolling mill in 1818, in Belleville, among them.

"Even Alexander Hamilton had Belleville connections. He married the daughter of John Schuyler, who was a General in the Revolutionary War."

The history of all these leaders were intertwined with that of Hornblower, whose advice and guidance was sought by all the entrepreneurs in the early days of steam power.



Roosevelt

Christmas trees are slow to collect



TREES ON THE GO - Mrs. Faye Pontrella, a householder on Hornblower Avenue, observes one of the many Christmas trees that have been awaiting disposal. Pucillo Collection reported it was turned away from the Essex County Disposal Plant in Newark because trees are supposed to be recycled into mulch, and the recycling machine is on the blink. Township officials said the trees would be gone by midweek, and the householders are waiting. (Photo by Howard Klausner)

Board withstands onslaught

Lally, Mazzuca stand up for students ~ 'They are the finest!' educator says

By Howard Klausner

School Trustee Ralph Mazzuca and Assistant Superintendent of Schools Michael Lally defended Belleville students from criticism and ethnic slurs, at Monday's meeting of the Board of Education.

"They are the finest!" Lally said. "And that includes the contributions of the industrious members of the minorities."

He spoke in response to comments from a member of Concerned Citizens of Belleville who asked what the ethnic makeup of the school system was. "Isn't 35 percent of the schools minorities?" she asked. "This town is changing. Good people do not want to move into Belleville anymore. And what is the Board going to do about it?"

Lally replied, "The percentage of minority students is about 32 percent. We are required by State law to present a monthly report on the racial and ethnic makeup of the

student body. And our students are the very finest."

"You have only to visit our schools to see what is going on in the classrooms and see the accomplishments."

"And as for the minority students," he swept his hand around the room. "There is the young lady representing the Student Council here, and in the back row is a young man who is about to embark on a law career."

Board of Education Vice President Ralph Mazzuca told the audience, "I hear so much negativism here. If you would only come to the schools and see what is going on, if you could have attended the student concert I did, it might give you a lift."

His comments drew jeers.

Former Commissioner Vincent Frantantoni produced a paper on which he said was a list of words copied from a classroom blackboard. The list included "rainbow

coalition, homosexuality, gays in the armed forces."

"Is this on the curriculum you are putting in the schools?" he asked.

Lally said he was unaware of the words being on a blackboard and said, "That is not on our curriculum."

Frantantoni said he had chanced upon the blackboard when visiting the high school one day. He did not explain how he happened to visit that particular classroom at that particular time.

The critics of the Board voiced their anger at the approval of four percent pay raises for teachers, seven percent increases for several secretaries, and any increases for the administrators.

"You should be put in the Hall of Shame," former CCB President Joseph Celso said.

"From you, I accept that as an honor," Trustee Joseph DelGuer-cio said, smiling.

Harry Leiss, BHS star athlete, WW II pilot, photo engraver

Harry Paul Leiss, Jr., 69, of Trumbull, Conn., noted as an athlete at Belleville High School and a World War II fighter pilot, died on Sunday, Jan. 10 in St. Joseph's Hospital, Stamford, Conn.

Born in Belleville, Mr. Leiss was a member of the Belleville High School Class of 1942, whose members were plunged into World War II.

In high school, he was an outstanding athlete, active in rowing and football. He later played football at Lehigh University.

Mr. Leiss served as a pilot in the Army Air Force, and saw service in China.

He resided in Clifton and Norwalk, Conn. before moving to Trumbull 27 years ago. He was Photoengraver for Graphic Color Plate of Stamford for 26 years until his retirement one-and-a-half years

ago.

Mr. Leiss maintained his friendships with members of his high school class. At a recent class reunion, he showed video tapes he had prepared of photographs of classmates and their activities.

He was a member of the Society of Photographic Scientists and Engineers of Springfield, Va.

Surviving are his son, Harry Paul of Trumbull; five daughters, Barbara Leiss of Sneads Ferry, N.C., Nanette Leiss of Norwalk, Conn., Loretta Leiss of Clifton, Gail Black of Garfield and Jennifer Leiss of Trumbull; eight grandchildren and one great-granddaughter. He was the uncle of Belleville Township Clerk Mary Lou Hood.

A funeral service was held on Wednesday, Jan. 13, at the J.C. Fila Lexington Memorial Home in Clifton.

Church to institute new ministry

Christ Episcopal Church, 393 Washington Avenue, will begin a new ministry when the Reverend Carolyn Lumbard is instituted as Rector-In-Charge of the church at a special eucharist on Jan. 16, at 10:30 a.m.

Officiating will be the Reverend Jack Spong, Bishop of the Episcopal Diocese of Newark. The service will be the official beginning of Lumbard's ministry with Christ Church. She began her service with the church in October, filling the position opened by the retirement of Dr. Fred Long in 1990.

Lumbard comes to the church from St. Paul's Church in Morris Plains, where she served as Associate Rector. She was born in North Carolina and was raised in Orange. She attended Upsala College, where she majored in music. She has a Master of Divinity from Virginia Theological Seminary.

The Jan. 16 service is open to the public. For information regarding the service or other services of the church, call 751-0616.



TO BEGIN MINISTRY - The Reverend Carolyn Lumbard will become Rector-In-Charge of Christ Episcopal Church in Belleville at a special eucharist on Saturday, Jan. 16, at 10 a.m.

Aside From That

By: Howard Klausner

Walt Gollender, of the *Italian Tribune News* sent us a clipping of his column in that newspaper, to remind us of long-time *Silver Lake* habitue **Frankie Valli**, whose singing career has had the nearly miraculous survival record of almost 40 years. It was back in the 1950s when he was one of the *Four Lovers* singing in the *Newark* night spots that once provided a wealth of real music. He was **Frank Casteluccio** then. Later, in the 1960s, he was part of the *Four Seasons*, and a lot better known. ● ● ● ● Mr. Gollender, who used to attend the singer's not-too-well-attended performances in the early days, writes: "A show business legend and true survivor should not be a 'best-kept secret'. You would be amazed at many recordings this man has released that most of us know nothing about. What a travesty! What a disgrace - given all the junk that is peddled in the name of entertainment." ● ● ● ●

"Stand up for an entertainer who kept on singing, recording and drawing countless crowds after almost suffering a permanent loss of hearing. How many other show biz acts could have weathered the coming of the Beatles, MTV and the insurmountable rigors of life? Thirty years is easy to say, in words, but not that easy to survive. Mr. Frankie Valli did it, and more so." ● ● ● ● Another romantic vision is shattered with word from *United States Park Ranger Brian Atkinson* that those tall fire watch towers we see on the ridge lines of distant mountains are rarely, if ever, in use. "Perhaps at the height of the season, you might want to spot fires from it. Or, if I thought someone was trying to run drugs through the area, I might use it. Otherwise, they stay empty." Atkinson just completed a 12-week course for Rangers given in *North Carolina*, where the curriculum includes law enforcement and fire fighting. He was on home leave when he appeared downtown for some shopping. Two National Parks in easy reach are *Gateway National Park*, which includes *Sandy Hook*, *Ellis Island* and the *Statue of Liberty* and the *Delaware Water Gap*, which he considers to be a spectacularly beautiful land and riverscape. "It even impressed a Ranger from *Alaska*," Mr. Atkinson said. For a weekend trip, he suggests the *Blue Ridge Mountains* and the *Great Smokies* - "There's nothing more beautiful" - but the one assignment every Ranger wants is *Yellowstone*. You have to be a veteran Ranger before you're even considered for *Yellowstone*, Atkinson said.

Despite the friendly image evoked by *Smokey the Bear*, bears still take human lives. There is an entire training course devoted to how to stay alive in bear country. "The black bear generally will run away when he hears you, but the Kodiak will look upon you as a meal, if he's hungry." Some weigh in at more than 1,200 pounds, and they would give *Bigfoot* reason to keep moving. But the perils of the Outdoor Life do not outweigh the glories of living amid some of the most wonderful pieces of landscape known to man. *Teddy Roosevelt* knew what what he was doing when he began the National Parks. ● ● ● ● *Marine Joe Curran* has seen five years of service, and so far he has been sent on patrols into *Turkey*, tours of *Haifa, Israel* - "The people really treated us nice there"; a foray into *Lebanon* in an attempt to rescue *Marine Col. William Higgins* - later found murdered; an expedition into *Liberia* to halt a civil war there, and *Operation Desert Storm* where his role was to help keep an eye on *Jordan*, whose *King Hussein* was acting up in support of *Iraq*. ● ● ● ● In *Liberia*, two men in his outfit were wounded.

He didn't recall any casualties from the other operations. He has also had the chance to visit many parts of *Spain* and "more parts of *Italy* than I've ever seen in this country." A married man, Curran reports that this past Christmas was the first one he had enjoyed with his family in three years. "It's not so bad to miss a holiday where you're over there. The hard part is when they send you over when you're about to have a holiday." This is what happened to the military sent to *Somalia* last December. He missed that trip because of his assignment as a staff member of an Officer Training School in *North Carolina*. Some times, it is a problem adjusting to a place where the natives speak English, or the approximation of it heard Deep South. ● ● ● ● *Fifth Ward Councilman Harry Zilch* says he agrees with *Edith DeFeo* that all school busing should be dropped, so that the kindergarten set can start learning to fend for themselves in city traffic. "Like Edith, I think it will toughen the little fellows for the trials of life. What can be more thrilling than to watch a six-year-old leap out of the path of an oncoming freight train? Or more instructional? And isn't dodging real maniacs more fun than watching *Freddy Krueger* on some re-run? I tell you, we'll have a bunch of kids in this town who'll make the Dead End kids look like wimps. And what better way to learn mathematics than a discussion of fee with your bail bondsman?" He announced that the *Kool Kumbur Boys* were planning a *Chicken Contest*, using buses loaded with commuters as the contestants. ● ● ● ● And *Baldassaro DiVinceazo Mitten*, our Copy Cat, was trying his luck with *Mignonette*, the beautiful Kitchen Cat at *Antonio's Restaurant* when he overheard the dispute over *Mario Drozd's* birthday cake. The party was planned by *Sam Papa* for a Monday night, but the cake was ordered for Friday. "And this guy is the Chairman of the Planning Board?" Baldassaro asked. "He's a lot more competent than you are, and much more loyal to his friends," Mignonette replied. "But Honey, I'm loyal to all my girlfriends!" Baldassaro said, as he was pushed out to Franklin Avenue.



NEWEST FIREFIGHTER - A four-month-old Dalmatian puppy has joined the Belleville Fire Department as Official Mascot. She is shown with Firefighter Tom LoMin. She has captured the hearts of the Firefighters, and now she needs a name. Deputy Fire Chief Joseph LaBruzza says the award will be a \$100 Savings Bond. See story for details. (oto by Howard Klausner)

Name Fire Mascot, and win a \$100 Bond!

By Howard Klausner

Deputy Fire Chief Joseph LaBruzza has announced a drawing for the name of the Mascot.

Anyone up the age of eight who is a Belleville resident may send a Post Card to the Firehouse or to the Belleville Times, with the suggested name of the Dalmatian, and a home address and telephone number of the sender.

A drawing will be held in February and the name drawn from the entries will be the one bestowed on the Dalmatian. The sender of the post card will receive a \$100 Savings Bond from the Fire Department Safety Program.

In time, the Dalmatian may make visits to schools and hospitals, bringing the message of safety with her, along with her affectionate, warm regards.

The immediate favorite of the men at the Franklin Avenue Firehouse, she is calm in the midst of the din of fire alarm bells.

The gift of Mark Palmier, a Belleville resident, the Dalmatian is a highly intelligent canine who is both friendly and protective.



Free Quotes
Notary Public

Member Belleville Chamber of Commerce

★ **AUTO Immediate Coverage***
★ **HOMEOWNERS/TENANT**
★ **BUSINESS/WORKERS COMP.**
*Immediate coverage for qualified applicants
ALL YOUR INSURANCE NEEDS. COME IN FOR FREE QUOTES

TROISE INSURANCE AGENCY INC.
172 Washington Avenue, Belleville
759-4100
HOURS: Mon-Tues-Wed-Fri 9:30-5:30
Thurs 9:30-6pm
Sat Evening by appointment only

FOR JANUARY 1993 ONLY \$15.00 N.J. INSPECTION
(100% Satisfaction Guarantee)

Ol' Betsy Auto Repairs
Over 30 Years Experience
• Snow Plowing
• Guaranteed Auto Repairs
• ASE Certified Mechanic
• Lifetime Guaranteed Brakes
• N.J. Inspection
Lifetime Guarantee on Brakes

504 Washington Ave.
Belleville, N.J.
(201) 759-5561

PENNY-WISE CHECKING

AFFORDABLE CHECKING AT SECURITY

- ✓ Minimum Opening Requirement Of \$25 .
- ✓ No Minimum Balance
- ✓ Low Monthly Service Charge Of \$2
- ✓ First 200 Checks At A Discounted Rate
- ✓ No Charge For First 5 Checks Paid Per Month
- ✓ 25¢ Charge For Each Check Over The First 5 Paid
- ✓ Limit Of 5 Deposits Per Month
- ✓ No Charge For Direct Deposit
- ✓ Personal Use Only



SECURITY NATIONAL BANK AND TRUST COMPANY

OF NEW JERSEY

"Service With A Personal Touch!"

Frederick J. McGrath, A.V.P.
39 Bank Street
Newark, N.J.
201 643-5700

Janet Gilmore A.C.
431 Kingsland Street
Nutley, N.J.
201 661-5121

Joanne M. Paulson, A.V.P.
213 Harrison Street
Nutley, N.J.
201 661-5110

All other Penny-Wise charges such as for overdrafts, designer checks, special services, etc., are the same as for basic personal checking. Bank charges may be changed at any time.

MEMBER FDIC



Ten free trees available

Ten free trees will be given to each person who joins The National Arbor Day Foundation during January 1993, said Foundation officials recently.

The free trees are part of the nonprofit Foundation's Trees for American campaign.

The ten trees are the Sugar Maple, White Flowering Dogwood, Pin Oak, White Pine, Red Maple, Birch, American Redbud, Silver Maple, Red Oak, and Colorado Blue Spruce.

"These trees were selected to provide benefits every season of the year: lovely spring flowers, cool summer shade, spectacular autumn colors, and winter berries and nesting sites for songbirds," John Rosenow, the Foundation's

executive director, said.

The trees will be shipped postpaid at the right time for planting between February 1 and May 31 with enclosed planting instructions. The six to twelve inch trees are guaranteed to grow or they will be replaced free of charge.

Members also receive a subscription to the Foundation's "Arbor Day" news magazine, The Tree Book with information about tree planting and care, and a membership card.

To become a member of the Foundation and to receive the free trees, send a \$10 membership contribution to Ten Trees, National Arbor Day Foundation, 100 Arbor Avenue, Nebraska City, NE 68410, by January 31.



TREES HAVE ARRIVED - Workers plant the last of some 60 trees planted along Franklin Street in Silver Lake under a redevelopment grant. The Silver Lake Business Council said that the trees will provide beautification for the neighborhood. (Photo by Howard Klausner)

105th Anniversary Sale

MEN AND WOMEN
P.W. Minor • Drew • "Barefoot Freedom"
Clinic • Spiess • Alden • Foot-So-Port
"Extra Depth" for Orthosis and Molds

15% OFF 1st PAIR - 25% OFF 2nd PAIR
ON ALL SHOES PURCHASED OR ORDERED FROM
JANUARY 14th to JANUARY 30th

J. T. MURDOCH SHOES
Open Tuesday-Saturday 9:30 to 5:30 / Friday till 8:00 P.M. - Closed Sunday
623 Bloomfield Ave. • Bloomfield, NJ • (201) 748-6484

A Community Service Project Sponsored By

B U T T I T T A
CHIROPRACTIC PHYSICIANS GROUP

Complimentary Spinal Health Screening

HAVE YOUR POSTURE CHECKED. SEE HOW OTHERS SEE YOU

FREE Health Screening Includes:
Spinal Exam • Blood Pressure Screening
Free Health Information
Continuous Video Showings on Health & Chiropractic
Free Hot/Cold Pack

Saturday, January 23, 1993
To avoid waiting, please call for an appointment
201-661-1100

591 Franklin Ave. Nutley, NJ 07110
Sign up now for your FREE computerized Nutritional Evaluation

*while supplies last

Turn-of-century town nestles in corner of historic tavern

The Crossing Inn has been a landmark in Silver Lake since 1912, its interior not much changed from the day it opened.

Once a place where train riders alighted, it is still a place that captures the look of a different time and era.

Manager Dennis Walsh has instituted his own tradition at the

Inn.

Painstakingly, he has collected porcelain pieces depicting the buildings of a village as it would have looked early in the century.

"Some pieces are discontinued each year, and new ones are added," Walsh said.

The town's lights gleam, the interiors of the buildings glow, and

snow covers the streets. A one-car railway circles the town, and tiny figures represent the citizens of the time.

Each year, Walsh expands and changes his little city, but it remains basically the same - a recreation of a time when the pace was slower, and there was more time to smell the flowers.



BUSY LITTLE TOWN - The downtown district of Christmas Village has fine structures centered around the town hall, not too different from Belleville's Municipal Building.



THE CREATOR - Larry Walsh, President of the Silver Lake Business Council, has spent years collecting the pieces for his Christmas Village, which makes its annual appearance at the Crossing Inn. (Photos by Howard Klausner)



READY TO SAVE - A fire engine is ready to roll from the Christmas Village Fire House, with fire fighters on the run.



TOWN TROLLEY - Like the Newark City Subway, a single tram car circles Christmas Village, while Santa's sleigh sails overhead.

STASH'S PARK PUB

We've made some changes at the Park Pub and we'd like you to help us celebrate! Sure, we are the same Park Pub that you know and love but we are newly renovated, have a new menu that is out of this world, and added live entertainment! So stop by today and get in on the fun!

SUPER BOWL PARTY!
Get up off your sofa and celebrate with us!
OPEN BAR & SUPER BUFFET
Starts 1 hour before Kick-off
\$40.00
per person
Call today for reservation

Every Thursday
ACAPPELLA NIGHT
Jan 14th - The Delmonicos
Jan 21st - Magic Moments
Jan 28th - Sound Investment
2:00pm - closing
NO COVER CHARGE!

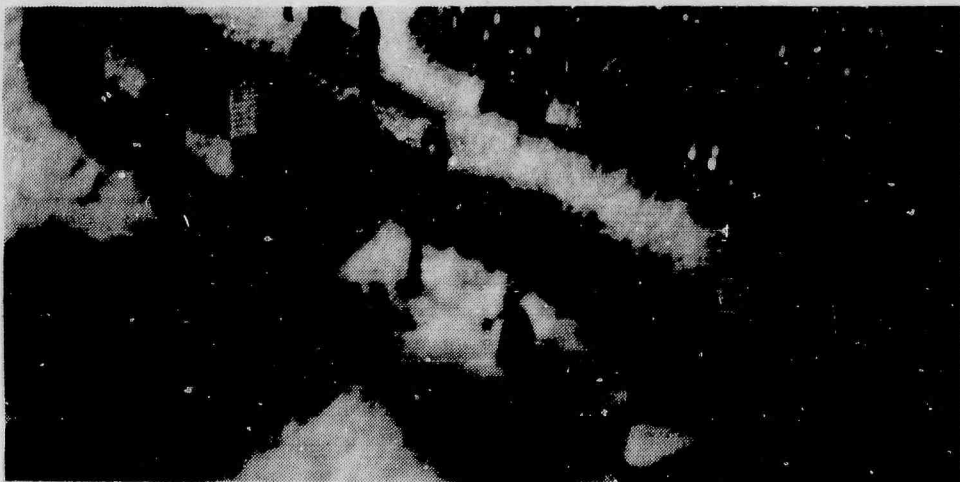
HAPPY HOUR
This is the place to help you unwind with good people and great prices!
\$2 BAR DRINKS
\$1 DRAFT BEERS
4pm-8pm

THE TROUBLEMAKERS
Live Music Friday & Saturday
NO COVER CHARGE!
\$1.50 14oz. Mugs
ALL NIGHT!

Call (201) 235-0696

799 Bloomfield Ave. Nutley, NJ 07110 (Corner of Kingstand Ave. and opposite front gates of Hoffman-LaRoche)

Stash's Park Pub - It's your kind of place!



BIRD'S EYE VIEW - Residents of Christmas Village enjoy a shoe shine, sell hot chestnuts from a portable stand or push a wagon through the snow.

Video Repair Express

Having a Problem With Your V.C.R.?

FREE Pick-up

FREE Return

FREE Repair Estimate

Senior Citizen Discount

90 Day Guarantee on Repairs • Most Repairs Done In 48 hours

V.C.R. Cleaning \$14.95 Reg. \$29.99

Call Video Repair Express

(Video Tonite)

997-4141

11 Ridge Rd., North Arlington

NUTLEY FARM'S

FRESH FRUITS & VEGETABLES

Grand Opening

THURSDAY JANUARY 14TH

BROCCOLI RABE
79¢ lb.

BANANAS
29¢ lb.

RED EMPEROR GRAPES
99¢ lb.

Large California
NAVEL ORANGES
5 for 99¢

Grade A Extra-large
EGGS 49¢ Doz.

With Coupon Only
Expires 1/31/93

WE CARRY ELIO'S
BRICK OVEN ITALIAN BREAD Fresh Baked & Delivered Daily

Washington State
GOLDEN DELICIOUS APPLES
39¢ lb.

YAMS
4 lbs. for 99¢

Indian River
PINK GRAPEFRUIT
5 for 99¢

5lb. Bag
RUSSET POTATOES
79¢

"A Traditional Hometown Produce Market"

65 Franklin Ave., Nutley • **661-3095**

OPEN: Monday - Saturday - 8:30 - 6pm

OUR OPINION

Quiet Days

Quiet days are precious gems
Of treasured peace and calm,
No cares or troubles cloud the sky
The silence is a balm.

My soul is soothed and worry free
Such days in life are rare,
But when they come I feel God's love
And know I'm in His care.

— Dolores Karides

Whose rights are hurt?

The right of New York City to hand out parade permits is not questioned, but its judgment in who should be licensed is subject to question.

The only reason the Ancient Order of Hibernians is not being given the parade permit in Manhattan to honor the memory of St. Patrick is that, as believing Catholics, its members do not plan to allow homosexuals to march under a separate banner.

They do not ban homosexuals from parading with the rest of the marchers. The AOH simply does not want to give the impression that it accepts a flagrant denial of the teachings of the Church.

By the City's involvement in the issue, it is trying to force gay rights upon the believers.

By the same token, it could force the Israel Day Parade to accept a contingent of Jews for Jesus, or the PLO, if it thought that this was the "politically correct" thing to do.

It might as well demand that the Flat Worlders be allowed to march in a Columbus Day Parade.

The St. Patrick's Day Parade has been a symbol of the healthy pluralism of American society. Greeks march. Hindus march. The Steuben Society marches.

They all fly the American Flag.

And homosexuals can, and do march. They have the right to do so, and their attachment to the United States of America is not questioned.

But do they have the inherent right to force their opinions on others? Do Abortion Rights activists have the right to march in a parade where Catholic doctrine is a part and parcel of the whole reason for the parade? Otherwise, why name it after the Patron Saint of both Ireland and the Roman Catholic Diocese of New York?

The Ku Klux Klan has no inherent right to interfere with a Martin Luther King celebration.

We do not have to be Irish, nor Roman Catholic, to respect the right of a St. Patrick's Day Parade to express the glorification of faith and heritage. It does not impinge on anyone else's right to express their own opinions. In fact, it enhances that right.

Downgrading the schools

We know the political season is approaching when the tirades begin against raises for teachers and school administrators.

When someone argues that no one should receive the salary that a principal or a superintendent receives, they are really expressing their low opinion of the school system.

They would argue that a brain surgeon should receive less money than a professional basketball player. And indeed, most brain surgeons do get less money than professional athletes.

And they certainly argue that a rock singer is worth more to society than a mere director of a school system. We hesitate to think what they feel a minister or a priest should be paid, but we know it would not be in the high digits.

The fact is that in terms of the school budget, the raises given to the administrators is a drop in the bucket.

Instead of thinking how to reward the people who have helped make Belleville's school system - dollar for dollar - one of the best in Essex County, they think of how to punish those administrators.

But more than that, they hope to discredit the Trustees of the Board who will be seeking re-election in April.

The parents of the students whose futures are dependent on the quality of education provided by the schools should not be fooled. They know that a good educator is worth at least as much as a good ball player, even if their salaries will never be equal.

YOUR OPINION

Why pay administrators?

To the editor:

A few weeks ago I wrote to two of the town newspapers regarding outrageous pay increases given to our Board of Education Administrators. My letter was misinterpreted by a few as a criticism of teachers and school programs. I must clearly state I think our teachers are doing a fine job and I applaud the programs offered our students. It is the ridiculous pay increases given to our already overpaid Board of Education Administrators that I find offensive. My outrage was from the fact that Belleville has been hit with one of the highest tax increases in history.

These increases were based on a survey taken of corporate salary increases in this area. In the private sector many of the corporate heads work 48-49 weeks a year, five days a week, 8 to 12 hours a day, under stress. These raises are based on their

ability to keep their company in the black.

On January 4th, Mary Lee Fitzgerald, who was superintendent of the Montclair School District, was sworn in as the Education Commissioner of the State of New Jersey at a salary of \$100,225 a year. That is \$2,000 less than was voted for by our four elected BOE members for a BOE administrator. Mary Lee Fitzgerald then appointed Elena Scambio to the post of Assistant Commissioner taking over the job of TWO current commissioners.

The Daily News was sold to publisher Mortimer Zuckerman. He said it hurt him to let 170 people go but it was a matter of economics. He also said in an interview he wanted the newspaper to be a voice of the people so it would increase circulation.

I work for a company that has been in business for about 70 years. Over the last year they had to let people go to meet the budget and survive. The remaining employees had to make many concessions such as contributing toward the medical coverage, taking pay cuts and giving up several holidays.

In every sector of private enterprise companies are laying off and cutting back including the state of NJ. Bloomfield elected a mayor who is in the process of freezing wages in the Township due to the tax increases. This should be done in Belleville as some of the taxpayers receive monthly incomes amounting of what our administrators earn in three days.

If our elected officials do not have any regard for the overtaxed people of Belleville they should be removed. I am against petition recalls because they put a financial burden on the town, but if you can replace four elected members at one election it might be financially feasible before they put the township into bankruptcy.

Roy Brown

Ed. Note: Fifteen years ago, the school system was a political grab bag and its education level deplorable. It has taken good leadership to bring it up to its present level. And if you like the current quality of teachers, remember who it is who appointed them — the Administrator and the Board. HK

A van for Manny

To the editor:

I'm "Manny." I am 12 years old and on January 12, 1993, I will be 13 years old.

When I was born I was unable to move my arms or my legs. I didn't know all my muscles were spastic and I would never be able to move for my entire life. The day after I was born I started having convulsions and I have been on medicine to prevent convulsions since. I have big brown eyes but I have never been able to see. I have had to have diapers all my life. A year ago a hole was made in my throat so I could breathe. My tongue grew but my jaw didn't, so to be able to breathe a permanent tracheotomy was made. My family feeds me through a tube in my stomach, so you see I can never enjoy that taste of candy or ice cream. Last year at this time I weighed 19 pounds, and since I have the tracheotomy I am now 49 pounds.

If you think that I am unhappy you are very wrong. All my life I have been surrounded with love. I can feel the love that my mother and father have for me. My grandmother and my grandfather, who is a detective with the Belleville police, love me very much. My three aunts who live near me in Belleville show their love by helping my parents care for me. My Aunt Simone makes funny noises that makes me laugh. When I am in the arms of all these people who love me, it makes me happy. I enjoy listening to music especially when I know my family is around me.

Since I have put on all the weight (30 pounds in one year) it is very hard for my mother to carry me about. She needs a special type of vehicle to take me back and forth from school.

Dr. Noonan and the Belleville Democratic Party are going to have a birthday party for me on Jan. 17. I want to invite all the people of Belleville to come. It will be at the Knights of Columbus on Bridge Street from 6 to 9.

If anyone would like to give me a birthday present, please give money to my mother so that she can buy a van to drive me around comfortably both for her and me. Thanks!

"Manny" Edwards Brown

WE WELCOME LETTERS

... of interest to our local area. They should be short and to the point, they must be signed for attribution and contain the address and telephone number for verification.

Flight #198



A feature of The Nutley Sun,
the Belleville Times and Bloomfield Life

By Frank Orechio

• FOLLOWING the leadership of County Executive Tom D'Alessio, the Essex County Board of Freeholders recently designated Freeholder Joseph Parlavocchio as Majority Leader of the Board. The selection was made by members of the Democrat caucus. The powers of the Majority Leader compliment the powers of the Board President.



Joseph Parlavocchio

• THE exciting personality of Jaye Tarantino is back on the Belleville scene again. Jaye is Cruise Specialist for the Belleville Travel Services. She was a former Vice President/Advertising Director of the Belleville Times. A heavy-duty worker, when it comes to business, time is of no consequence for Jaye.

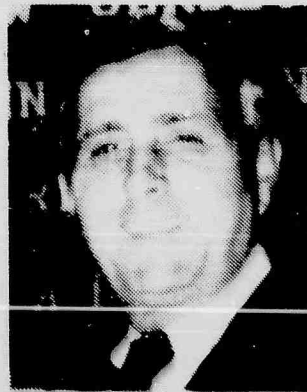
• IN talking with our Newark friends, a suggestion was made that Newark School Board members should be elected similar to the elections at which members of the Newark City Council are elected — four at-large members and one from each of the five wards. The argument in favor of this approach is very strong — it insures the one man one vote theory of elections.

• YOU politicians are not going to believe this — it's almost like a page out of Ripley's. Senator Dick Codey reportedly made a commitment to run on the same Primary Democrat line as East

Orange Mayor Cardell Cooper. Currently, Cardell has fallen out of favor with the Democrat County organization, and if there is credence to the report that Senator Codey has embraced the Cardell Cooper East Orange Democrat line, the D'Alessio Democrats have Orange Mayor Bob Brown, who also holds an Assembly seat, as their candidate-in-waiting.

• LAST Tuesday, my brother, Carmen, Tom D'Alessio and I travelled to Washington to participate in the festivities following the swearing-in of Congressman Herb Klein. Mayor Orechio was Klein's Campaign Manager. Klein received major support from the D'Alessio Democrat organization. As for myself, I have a ten-year personal relationship with Klein as lawyer-client. In the legal matters that Klein represented me, his services were of a superior quality.

Also in attendance at the celebration were Essex County Freeholder Joe Parlavocchio and Newark Ward Chairman Lou Turco.



Tom D'Alessio

• BLOOMFIELD P.B.A. President Michael Ruggiero led the P.B.A. to deep-six the motion picture, "Tresspass", starring rap musician, "Ice-T". The police organization gave thumbs down to its members providing off-duty security for the film. In announcing the action, Ruggiero said, "We are boycotting anything that has to do with Ice-T." The action was

part of a nation-wide police boycott of the controversial rap artist who released an album that featured a song entitled, "Cop Killer". The song described police in disparaging terms. A belated three cheers for Ruggiero and his P.B.A. organization.

• CONGRESSMAN ROBERT TORRICELLI is angry at the Army Corps of Engineers for wanting to award a design contract to a foreign firm to handle the Passaic River Flood Project which involves an expenditure of \$1.2 Billion. The proposed tunnel would divert flood waters from the flood-prone Passaic River Basin through a tunnel to the Newark Bay. Torricelli said, "At a time when ten million Americans are out of work, it's simply unconscionable for the Army Corps to be considering a design award for a multi-million dollar public works project to an overseas firm." That, my dear readers, is an example of an alert congressman protecting the home turf.



Gov. Jim Florio

• GOVERNOR JIM FLORIO delivered his annual message Tuesday. He was at his best. The tone of his speech was totally conciliatory — a plan to continue working together with a Republican-dominated Legislature. He shared credit equally with the Republican legislative leaders. Florio said the partnership between the Republican Legislature and a Democrat Governor is serving New Jersey's best interests. The Governor said, "There will be no new taxes. The state will hold the line on spending." For the past year, I have been telling whoever cared to listen that Florio will win re-election in November. Nothing that I have seen on the horizon has changed my mind.

Belleville Times

Serving Belleville Since 1909

(USPS 049-220)

Publisher: Frank Orechio
Arnie Ziem
General Manager
Published Every Thursday
At 155A Washington Ave.
Belleville, N.J. 07109

Second-Class Postage Paid
At Newark, N.J.

Postmaster: Send address changes to:
The Belleville Times, 155A Washington Ave.,
Belleville, NJ 07109

Editor: Howard Klausner
Social Editor: Helen Maguire
Sports Editor: Michael Lambert
Advertising: Rene Theodore
Art Director: Diane Lombardy
All departments call:
759-3200

Fax: 667-3904

Annual Subscription: \$16.00
Senior Citizens: \$ 8.00



POLICE AND ACTOR - Actor Tony LoBianco was honored recently by the Italian-American Police Society of New Jersey at its annual dinner dance. From left are Dr. Nicholas Ricculli of Belleville; Lieutenant Rocky Nisvodka of Nutley; LoBianco; Ace Alagna, Publisher of the Italian Tribune News and IAPS President William Schievella.



NEW I.A.C. OFFICERS - Dennis Gaglione, standing on platform, administered the oath of office to new officers of the Belleville Italian American Club at the Christmas party held in the Chandler Restaurant. From left are Treasurer Frank Ceres, Past President Edith DeFeo, Sergeant at Arms Rose Coppola, Vice President Vincent Simeone, President Joseph Fornarotto, Gaglione, Corresponding Secretary Lucy Vecchione, Trustee Fay Checchetto, Second Vice President Romeo Checchetto, Parliamentarian Lee Carlo, Trustee Vincent Carlo and Recording Secretary Al Vecchione.

Attorney tells Mayor not to vote; Blue Cross to offer its own plan

Belleville Township Attorney Robert Giordano has advised Mayor Marina Perna not to cast a vote on the hiring of the Rasmussen Company as the township's insurance carrier.

"Council members cannot vote if they have a pecuniary interest, or the appearance of a pecuniary interest, in any matter before the Township Council," Giordano said.

He declined to say whether or not Mayor Perna, an attorney, had represented Rasmussen in any law matters.

A "pecuniary interest" means a financial stake of any kind.

Mayor Perna's vote could be the deciding one as the Township Council considers a proposal to drop Blue Cross-Blue Shield for a self-insurance plan administered by Rasmussen.

Unless the Mayor decides to ignore the town attorney's advice, the Council appears to be evenly divided on the issue of switching to Rasmussen. Failure to obtain a majority would block the resolution.

Township Manager Stephen Cuccio met with a representative of Blue Cross-Blue Shield who

announced that by Jan. 22, a self-insurance plan administered by the health insurance carrier would be presented to the Township Council.

Reportedly, the plan would meet any objections by township employees to self-insurance, but a random opinion survey indicated that no self-insurance plan would

be satisfactory to the employees.

"As it is, nobody can claim that Belleville is a prompt bill payer," one employee said. "And other towns, such as Clifton, have had terrible experiences with self insurance. Payments have been so slow that people have had liens put on their houses!"

ADVERTISE!

FAT IS FATTENING! Lean Line's "NEW PROGRAM" Gets right to the Fat of the Matter.

Lean Line's new program, based upon scientific findings, will show you how to lose weight without denial by eliminating fat from your fat cells. Pay only \$10 with this ad. Includes registration and 1st meeting fee. Join Lean Line today!

SAVE ONLY \$5.00 WEEKLY!

leanline™ Weight Loss Program

1-800-624-3100

EXPIRES 1-31-93

BLOOMFIELD
Essex Manor
41 Broughton Avenue
Tues. 7:15 PM

NUTLEY
American Red Cross
169 Chestnut Street
Mon. 7:15, Tues. 9:15 AM

OPEN HOUSE!

Sun. Jan. 24th - 1-3p.m.
Immaculate Conception High School

33 Cottage Place
Montclair, N.J.



(201)
744-7445

...the difference

The Catholic School Advantage Educationplus

Immaculate Conception High School does not discriminate on the basis of religion, race, national or ethnic origin.

Bereavement support groups offered by The Hospice

A number of new groups to help people deal with the loss of a loved one are offered by The Hospice, Inc., 3 High St., Glen Ridge. Bereavement support groups are made available by The Hospice, Inc. to families and friends who have experienced a loss due to illness or sudden death.

Bereavement groups are offered both in the day and evening to meet the needs of the participants. The safe atmosphere and understanding of support groups offer the bereaved the opportunity for acceptance and personal growth. The group experience offers the opportunity for one to share the pain, fears and frustrations after the death of a loved one.

Groups at The Hospice, Inc. succeed because of the resources, experiences and strength of their members and the professionalism of The Hospice staff. There are no fees for support groups but contributions are gratefully accepted.

New bereavement groups begin in January and meet throughout the year. Adult bereavement support groups meet in the day on Wednesdays and Monday and Wednesday evenings. The Hospice has groups for families that meet in the early afternoons. Art therapy is the primary medium used by the therapist working with the children. In parents' groups, parents learn how to support their grieving child and receive support from one another.

Anyone who would like to register for a group is invited to call Estelle D'Costa, director of Counseling and Social Services at 429-0300.

Centre Street Seafood

Retail and Wholesale Distributors

94 Centre St. Nutley • 284-1182

FRESH FISH DELIVERED DAILY

Salmon.....\$5.99 lb.
Red Snapper Fillet.....\$5.99 lb.
Homemade Crab Cakes.....\$2.00 ea.

FRESH SQUID CLEANED OR UNCLEANED

COUPON
\$3.00 OFF
Any purchase of
\$15.00 or more
Expires 1/31/93

HOMEMADE
ITEMS:
Stuffed Clams
6 for \$4.50
Calamari Salad
\$6.99 lb.

OPEN: Sunday 10am-2pm Mon. & Sat. 9am-6pm
Tuesday thru Friday 9am-7pm

Is Being Overweight A Threat To Your Health? Do You Need To Lose A Lot of Weight?

Immedicenters of Bloomfield and Clifton
Health Management Center - Weight Management Program

- Lose weight rapidly, safely, and learn to change your lifestyle.
- There is a weekly physician visit and weekly educational program.
- Long term maintenance is an essential part of the program.
- It is cost effective.

THE OPPORTUNITY OF A LIFETIME

We are one of 25 medical weight management programs in the county selected to study ursodiol for the prevention of gallstone formation. Financial benefits are offered to those who qualify and would like to participate in the research study. Eligible candidates required a specific height/weight ratio and a gallbladder free gallstones. Come to one of our FREE orientations on January 20, at 7:00 PM for a complete explanation of the program.

Call to reserve a spot.

Immedicenter Health Management Center
557 Broad Street

Bloomfield, NJ 07003 • (201) 680-1888

KITCHENS BY VERSA



GET THE QUALITY AND
VARIETY YOU EXPECT...
THE SERVICE AND
EXPERIENCE YOU DESERVE...
AND THE KITCHEN YOU NEED
AT THE RIGHT PRICE!

WE TAKE MEASUREMENTS AND
DESIGN YOUR KITCHEN
ABSOLUTELY FREE!!!
COMPARE BEFORE YOU BUY!
GIVE US A TRY!!!

VERSA SUPPLY
COMPANY
30 WILSON AVE., NEWARK, NJ
201-589-3355

FREE BROCHURE SENT ON REQUEST

HOME A-LOAN

The Greatest Home Equity Loan Ever!
The Low Rate Is Fixed For 5 Years

7.8%
APR

NO POINTS—NO APPRAISAL FEE—NO LEGAL FEE—NO APPLICATION FEE

This rate is LESS THAN HALF of most credit card rates. Therefore, it's the best way to borrow money for any purpose. You can pay all your bills and even finance a new car. Most importantly, you may be able to deduct the interest from your taxes.*

Rate valid for 1 and 2 family N.J. owner occupied homes only. Application must be received by March 31, 1993. Loans are available from \$10,000 to \$100,000. Offer subject to change without notice. Consult your tax advisor for details. 10 and 15 year terms also available. Loans for amounts from \$100,000 to \$200,000 also available.

CALL TOLL FREE 1-800-THE-LOAN

THE TRUST COMPANY

The Bank with Heart since 1896

44 Branches in Bergen, Essex, Hudson, Middlesex, Monmouth, Morris, Passaic and Somerset Counties.
Assets Over \$2 Billion • Fractional Office: 25 International Square, Jersey City, N.J. • Member FDIC.

marty's
WAREHOUSE
SHOE OUTLETS

FAMOUS
BRANDS AT
FAMOUS
LOW
PRICES.

CELEBRATES ITS

**GRAND
OPENING**

SPECIAL
GRAND-OPENING
PRICES IN
ALL MARTY'S
WAREHOUSE
OUTLETS

OUR FAMOUS
"NO QUIBBLE"
POLICY
Money Back Guarantee
Just As If You Paid
Full List Price

We Accept Visa, Master Card,
American Express
and Personal Checks

FAMOUS LABEL AND DESIGNER FOOTWEAR FOR THE ENTIRE FAMILY AT

SAVINGS of 20% to 60% OFF
DEPARTMENT STORE AND SPECIALTY SHOE STORE PRICE!

**in BLOOMFIELD
With Spectacular
Footwear Savings!**

If you're still paying department
store and specialty shoe store
prices for your famous label and
designer footwear then you're

PAYING TOO MUCH!

At Marty's you'll find the same top selling
labels for men, women and children, all the
latest fashion, first quality styles in full size
runs (including many hard-to-find widths)
plus famous label handbags and socks...

**but at savings of 20% to 60% off what
you're accustomed to paying!**

We protect our suppliers by never
mentioning name brands in our ads, but
stop by and browse through our aisles...

**you'll recognize the famous
labels immediately!**

All outlets join the celebration with
**Special Grand Opening prices on
famous labels** for the entire family!

An
Additional
\$5 OFF
On Famous Label
Handbags With
Shoe Purchase

FASHION BOOTS

DRESS SHOES

CASUALS

HANDBAGS

SPORT BOOTS

ATHLETIC SHOES

For MEN, WOMEN & CHILDREN!

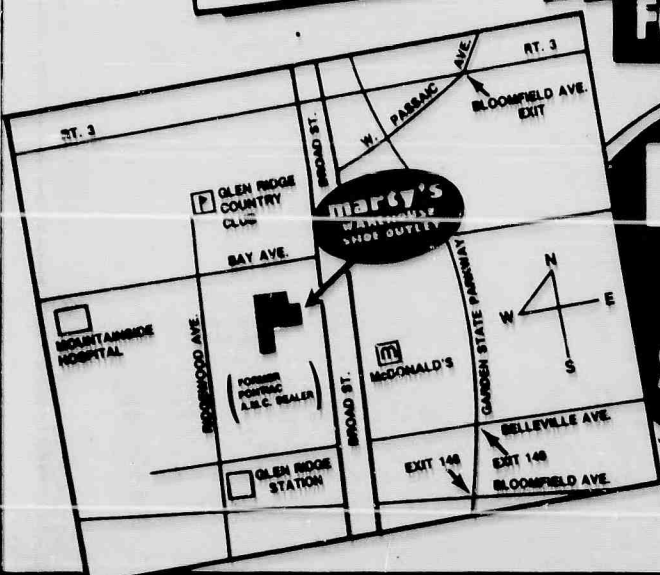
EXTRA VALUE COUPON

THIS
COUPON
WORTH **\$5** OFF ANY
PURCHASE OF
\$20 OR MORE

AT ANY MARTY'S
WAREHOUSE SHOE OUTLET

PLEASE SIGN YOUR NAME
COUPON EXPIRES JANUARY 24, 1993

LIMIT ONE PER CUSTOMER



marty's
WAREHOUSE
SHOE OUTLETS

BLOOMFIELD
470 Broad Street (Former Pontiac AMC Dealer)

429-9622

Open Monday thru Friday 9:30 AM to 9:00 PM
Saturday 9:30 AM to 6:00 PM
Sunday 11:00 AM to 5:00 PM

Grand Opening Specials Also At:

- **CLIFTON**, At Larry Levine's, 340-7686
- **FAIRFIELD**, At Gallo's Lighting, 575-4934
- **WAYNE**, Ramapo Plaza, 305-6700

Other Outlets in N.J.: Secaucus • Westwood • Lodi • Hackensack • Roxbury Mall • East Hanover • Garwood • Union • Edison
New Brunswick • Marlboro • Rahway • Manasquan • Flemington • Greenbrook • East Windsor • Cherry Hill • Turnersville

Registration for Storytime

Spring Storytime for Belleville children began on Jan. 11 with limited space filling up fast. Toddlers must be at least two and a half years old, while preschoolers must be three and a half years old. Please enroll your toddler for the 9:30 AM Tuesday or Thursday session. Your preschooler can be enrolled for either the 10:30 AM Tuesday or Thursday session. Storytime begins Tuesday, Feb. 3 or Thursday, Feb. 5.

Please call the Cozzarelli Children's Room at 450-3436 for more information.

Birds in winter activity

Children will be able to learn about birds in winter through crafts and stories at 1:30 p.m. on Jan. 23 in the James J. Cozzarelli Jr. Children's Room. The program will begin with stories about birds, to be followed by the craft projects of making a bird feeder and a hanging bird decoration. This program will be of interest to children of all ages.

Tax forms at library

The Belleville Public Library will offer a full range of free and reproducible state and Federal tax forms in 1993, for preparation of 1992 income taxes. The reproducible forms can be photocopied at a cost of fifteen cents per page, with a discount for seniors. This library service is combined with available tax assistance for all ages.

For more information, please call the library at 450-3434 during regular library hours.

Folk art fish display

The library has mounted an exhibit of hand-carved fish and books about aquarium fish for the month of January. Joan Taub, in charge of the library exhibits, describes the display as "A very colorful break from the cold gray colors of January." Some of the fish are examples of Mexican folk art while others are contemporary American gallery pieces.

The library is always seeking displays of collectibles, the work of local artists, particularly carvings and small constructions, for its second floor display cases. Please contact Joan Taub, between the hours of 9 a.m. and 2 p.m. weekdays, to arrange an exhibit. If you draw, are a painter or photographer with a body of framed work, please contact David S. Bryant to see about a 1994 or later exhibition of your work in the Trustees Room Gallery.

Book marks

Shafter Branch activities

The Mrs. Richard A. Shafter Branch Library located in School Number Four on Magnolia Street is pleased to announce some of its January activities for children and young people.

Jan. 19, 3:15 to 3:45 p.m. will offer a Snow Scene Craft opportunity for youngsters. Registration is required.

Jan. 25, 3:15 to 4 p.m. a Secret Popcorn Movie for children will be shown.

Jan. 29, 3:15 to 4 p.m. there will be a reading from the book, A Wrinkle in Time.

Italian language classes

The Belleville Public Library is pleased to announce a continuation of its popular Italian language class with instructor, Filomena Del Olmo. These classes began in the Fall of 1992, as part of the library's focus on the 500th Anniversary of Columbus' Voyage of Discovery. They will continue on ten consecutive Saturdays, at 10 a.m., beginning Jan. 16. To register, call 450-3434 during regular hours. Class size is limited, beginners are welcome, but early registration will secure you a place in this extremely popular class.

Lecture on Dr. King

In recognition of Dr. Martin Luther King Jr. Day, the Belleville Public Library will present a guest lecture by Dr. Ernest Dunn, a professor on the faculty of Livingston College at Rutgers University and Chair of the Department of African Studies. The lecture will be offered in the Trustees Room of the Main Library at 221 Washington Avenue, at 1 p.m. on Jan. 19.

Dr. Dunn has been a Rockefeller Scholar, a recipient of a Ford Foundation grant, and is widely respected for his research and teaching in the field of theoretical and applied linguistics.

Each year the Belleville Public Library presents an annual focus on African-American history, civil rights and literature as part of its recognition of the achievements of Dr. King. The library will be closed on Jan. 18 in honor of Dr. King's birthday.

Tax assistance at library

The Belleville Public Library will be a site for two free state and Federal income tax preparation programs beginning in February:

1. The AARP sponsored programs will offer tax preparation assistance to seniors on Wednesdays and Thursdays, 10 a.m.-2:30 p.m., beginning on Feb. 3 and running through April 8. Two AARP trained volunteers will be on site to offer tax preparation. Because demand for this service increases each year, the library requires registration for this service, in-person or by phone at 450-3434.

2. The library will also be the site for tax assistance offered by trained students from the Rutgers University Chapter of Accountants for the Public Interest. This service will be offered to all ages on Thursday evenings, from 6 p.m. to 9 p.m., beginning Feb. 6 and running through April 15. No registration is required.

Tri-County Camera Club exhibit

The work of members of the Tri-County Camera Club will be on display in the Main Library Trustees Room through the month of January. These photographs include wildlife scenes, landscapes, urban signage, and still life. The wide range of images demonstrate the broad areas of interest in contemporary photography. Though Club members travel widely in seeking photographic subjects, the library exhibit includes several recognizable New Jersey locations.

This display is open to the public during regular library hours.

Belleville resident promoted

The Board of Directors of United Jersey Bank has recently promoted Jeanette Holloway of Belleville to assistant branch manager, Edgewater branch, Retail Division, according to an announcement by Fred M. Moses, president and chief executive officer.

Holloway joined United Jersey Bank in 1991. She recently completed the Retail Management Train-

ing Program. Holloway received her bachelor's degree from Douglass College, Rutgers University.

United Jersey Bank, with 84 branches in Bergen, Essex, Morris, Hudson, Passaic and Warren counties, is a member bank of UJB Financial Corp., a financial services organization with assets over \$13 billion.

Chet Ross elected chairman of WWEMA

The Board of Directors of the Water and Wastewater Equipment Manufacturers Association has elected Chet S. Ross to serve as Chairman of the Board for 1993. Established in 1908, WWEMA is a Washington, D.C.-based trade association that represents the interests of manufacturers supplying products and technology to the water supply and wastewater treatment industries.

Ross is Chairman of Wallace & Tiernan, Inc. in Belleville, a leading

manufacturer of disinfection and chemical feed equipment. Ross is also President of North West Water, Inc., corporate headquarters to Envirex, Wallace & Tiernan, General Filter, Asdor and CFM Environmental Services.

A Penn State University graduate in Industrial Engineering, Ross resides in Cinnaminson, N.J. As 1993 WWEMA Chairman, he will preside over the organization's 18-member Board of Directors.

Block grant applications

County Executive Thomas J. D'Alessio has announced that block grant applications for fiscal year 1993-94 are available for local arts organizations and other local non-profit groups with a viable arts program. The Essex County Block Grant Program is administered by the county's Division of Cultural

and Historic Affairs.

The filing deadline for applications is Feb. 22, at 4:30 p.m. Information is available from the Grants Coordinator, Division of Cultural and Historic Affairs, located at 115 Clifton Avenue, Newark. The phone number is (201) 484-4274.

College grad

Craig Jackowski, a 1988 alumnus of Belleville High School, was graduated this past August from Kean College in Union with a degree in Management Science/Marketing.

After working his senior year with the American Airlines Sales Office as a Sales Associate in the Cooperative Education Internship

program, he has accepted the position of Customer Service Specialist with Bell Atlantic Mobile Systems in Bedminster.



Craig Jackowski



A Financial Guide - Don Galgano, Forest Hill branch manager at First DeWitt Savings in Belleville, displays the new Money Guide System to a customer. The new system is a free computer enhanced financial presentation that defines financial strategies.

Pet Corner



EST. 1967
"OUR BEST VALUE SERVICE"
COMPLETE LINE OF
PETS & PET SUPPLIES
Birds • Fish • Reptiles • Small Animals
"TOTAL PET CARE"
★ DOG GROOMING ★
406 Main Street, Belleville
751-1221
Open 7 Days

A CUT ABOVE FOR PETS ONLY
85 Franklin Avenue, Nutley
"Where Your Pet Is Treated As My Own"
PROFESSIONAL DOG GROOMING
OPEN 7 DAYS A WEEK
By Appointment Only
667-PET 1 (7381)

No Place Like Home
Pet Sitters
Insured & Bonded
Reasonable Rates
CALL:
345 - PETS

K-9 KATERING

85 Franklin Ave.
Nutley, NJ 07110
Pet Supplies, Pet Foods, Pro Plan,
Iams Diet, Dog Training
667-5775

BUICK Brand New '92 SKYLARK



Aquamarine Coupe, 4 cyl. eng., auto. trans., P/S, P/B, A/C, P/W, delay wipers, r. defr., cruise, tilt, P/ant., cass., no cost two-tone paint. Vin #NC614565. orig. MSRP: \$16,188. 4980 demo mi. incl. \$750 Rebate & \$400 1st Time Buyer (if qual.)

\$12,792

\$300 OFF

Make your best deal then present this coupon to the business manager and get \$300 off a protection package. Offer good on new or used vehicles in stock. One per customer, one per deal. Must present coupon at time of sale net delivery.

1992 BUICK SKYLARK

Neon Blue Coupe, 4 cyl. eng., auto. trans., P/S, P/B, A/C, P/W, delay wipers, r. defr., cruise, tilt, AM/FM star case. Vin #NC618062. MSRP: \$16,103. incl. \$750 & \$400 1st Time Buyer (if qual.)

\$12,892

Brand New '92 BUICK SKYLARK

Claret Red Coupe, 4 cyl. eng., auto. trans., P/S, P/B, A/C, P/W, delay wipers, r. defr., tilt, cruise, cass. Vin #NC618402. MSRP: \$16,103. incl. \$750 Rebate & \$400 1st Time Buyer (if qual.)

\$12,892

Brand New '92 BUICK SKYLARK

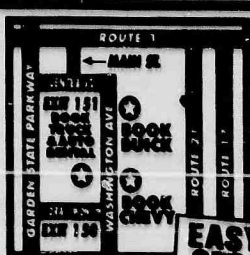
Neon Blue Coupe, 3.3i V6 eng., A/C, P/S, P/B, A/R, P/W, delay wipers, r. defr., cruise, tilt, AM/FM w/ case. Vin #NC612779. MSRP: \$16,983. incl. \$750 Rebate & \$400 1st Time Buyer (if qual.)

\$13,192

BOOK BUICK

BUICK • 66 WASHINGTON AVENUE • NUTLEY

667-0500



EASY TO GET TO!

Prices include all cost to be paid by the consumer except for licensing, registration and taxes

EVENTS IN THE AREA

For singles only...

O.N.E.S., a ministry to single, divorced and widowed persons under the Session of Bethany Presbyterian Church. Non-sectarian. Monthly luncheon 12:30 p.m. Jan. 17. Bring \$5 or food item of equal value for buffet. For information, call 777-2157, 667-5956 or 667-2640.

ACTS, a young adult Catholic singles group for ages 21 to 35. For information, call 759-9194.

Solo Singles, (40 plus), 6:30 p.m. Sundays, Central Presbyterian Church, St. and Morris Ave., Summit. \$2. Bridge, 7:15 p.m. 1st and 3rd Thursdays. \$3. For information, 908-665-2686 or 908-766-1839 6 to 9 p.m. only.

Mix and Mingle, for separated, widowed, divorced men and women 45 plus, 7 p.m. second Tuesdays, Parsippany library, 292 Parsippany Road. \$3. For information, 887-7833 or 335-7068.

Meetings...

Nutley AARP Chapter, 1 p.m. Jan. 14, Parks and Recreation, 44 Park Ave. 1993 dues due. Bring national chapter card and \$2. Speaker, Assemblyman John Kelly.

Concerned Citizens of Belleville, 8 p.m. Jan. 21, Elks Club, 254 Washington Ave. Refreshments. To be discussed: tax increases, new budgets. Send 1993 dues of \$2 per member to C.C.B., P.O. Box 353, Belleville if you cannot attend meeting.

Women's Auxiliary Lions Club of Nutley, seeking new members. 7 p.m. first Thursday at Meyer's Bakery, Nutley. For more information, call Betty Lazur at 667-9127 or Louise Beck at 661-2906.

Belleville Kiwanis Club, 6:30 p.m. Thursdays, Branch Brook Manor, Washington Ave., Belleville. For membership information, call Nino Bucciarelli at 751-2110 or Vinnie Sorrentino at 759-6475.

Court Gratia, Court 751, CDA, Nutley Amvets Post 30, 184 Park Ave. Jan. 18: paper bingo.

Woman's Club of Nutley, 1 p.m. Jan. 25, clubhouse, 216 Chestnut St. New members welcome.

Chess players, 7 to 11 p.m. Fridays, Bloomfield Civic Center, 84 Broad St. Chess tournaments first Fridays with trophies. Special section for children 6-14. For information, call Arkady Geller at 483-7927.

St. Mary's Youth Group, 8 to 10 p.m. Thursday nights, St. Mary's School gym, Msgr. Owens Place, Nutley. For those in the 8th grade or older.

Tri-County Camera Club, 8 p.m. Tuesdays, Nutley Historical Museum, 65 Church St. For more information, call 761-5591 or 667-3740. Jan. 19: program, The Impractical Photographer, large format, black and white; Jan. 26: workshop, Models.

American Legion Auxiliary Nutley Unit 70, 8 p.m., second Monday (except Jan.), Nutley post home, 45 Franklin Ave.

Essex Salon Eight of the Eight and Forty, 8 p.m. third Monday, 45 Franklin Ave., Nutley.

Essex County American Legion auxiliary, 8 p.m. second Thursday (except Jan.), 45 Franklin Ave., Nutley.

White Eagle Unit 44C, American Legion Auxiliary, fourth Monday, 41 Broughton Ave., Bloomfield.

Optimalist Club of Belleville, 6:30 p.m. Thursdays, Branch Brook Manor, Washington Ave. For membership information, call Gabe Nazzola at 997-2121 or Emil Nardachone at 450-8883.

Ladies auxiliary, Stuart E. Edgar Post 493, VFW, post home, 271 Washington Ave., Nutley. Membership open. Write to auxiliary at 376 Chestnut St., Nutley 07110.

Other events...

Free health screenings, Montclair Community Hospital, 120 Harrison Ave., Montclair. Appointments mandatory. Call 744-7300 ext. 4296, 10 a.m. to 2 p.m. Monday through Friday. Jan. 16: gynecological, Dr. Ehrlich; Jan. 19: hernia and breast, Dr. Fieber; Jan. 23: skin cancer, Dr. Bergamo; Jan. 26: knee problems, Dr. Matthews; Jan. 30: foot problems, Dr. Graziano.

Open house for elementary and secondary divisions, 7 to 9 p.m. Jan. 19, Lacordaire Academy, 155 Lorraine Ave., Upper Montclair. Refreshments, slide presentations, opportunity to meet administration, faculty, parents, students. For information, call 746-2660 or 744-1156.

CPR classes, Nutley Chapter, American Red Cross, 169 Chestnut St. CPR recertification: 1 to 3 p.m. Jan. 21, 7 p.m. Feb. 3, 7 p.m. March 3; infant, child and adult CPR, 7 to 10 p.m. Feb. 9, 16, 23. CPR: \$45; recertification: \$20. Pre-registration required. Call 667-3818 9 a.m. to noon and 1 to 4 p.m.

Fundraisers...

Art auction, 7:30 p.m. Jan. 15, St. Thomas the Apostle School, 60 Byrd Ave., Bloomfield. Wide selections of paintings by various artists reasonably priced. Refreshments. \$10 per person, \$15 per couple. For information, call 743-5199.

Family style spaghetti dinner, 7:30 p.m. Jan. 16, Nutley Elks 1290, 242 Chestnut St. Sponsored by ladies auxiliary. Spaghetti, meatballs, dessert, coffee, beer and soda. Entertainment by Bobby Byrne. \$15. For tickets, call Lucille Mulligan at 667-0890 or Marge Sasso at 661-9303.

uncheon, 11:30 to 1 p.m. Jan. 21, Nutley Woman's Club, 216 Chestnut St. Sponsored by Evening Membership Dept. Menu: baked ham, macaroni and cheese, vegetable, gelatin salad, dessert and coffee. \$4.75. For

reservations, call 667-7120 or 667-1161.

Linens sale, 9 a.m. to 5 p.m. Jan. 22, 23, personnel conference room, Clara Maass Medical Center, Belleville. Comforters, tablecloths, sheets, towels, bathroom and kitchen accessories. All proceeds to benefit medical center.

A Blast from the Past dance, sponsored by Rainbows for All God's Children, 8 p.m. to midnight Jan. 23, Sacred Heart Church, 76 Broad St., Bloomfield. \$20. Hot and cold buffet, dancing, set-ups, prizes. For information, call Richard Searls at 748-4906 or Gloria Young at 680-4559.

Annual Chinese auction, sponsored by Fairview Home and School Association, 7 p.m. Feb. 5, Chandelier, 340 Franklin Ave., Belleville. \$23 includes chicken francaise dinner and 25 tickets to auction block. For reservations, call Rita Daglian at 748-0547.

Valentine dinner dance, 8 p.m. to midnight Feb. 13, Bloomfield Elks Lodge 788, 296 Bloomfield Ave. Sponsored by ladies auxiliary. \$15 in advance, \$17.50 at the door. For tickets, call Gail at 748-8223 or the lodge at 429-1827.

1993 Entertainment books, \$40. Dystonia Medical Research Foundation, 661-3978 or 956-5351; Good Shepherd Academy, 667-2049 or 667-5081; Sisterhood of Congregation Ahavath Achim, 759-9394; St. Thomas the Apostle Junior H.S. Youth Group, 338-6822; Nutley Lions Club auxiliary, 661-3257; Grace Church, 235-1177.

Fairs, flea markets, rummage...

Winter rummage sale, 9 a.m. to noon, Feb. 6, Christ Church, 393 Washington Ave., Belleville. Household goods, clothes, bric-a-brac.

Class reunions...

Bloomfield 1967, needs volunteers to organize reunion. Call Joyce at 743-1901 or Nikki at 677-9200, ext. 107.

Bloomfield 1963, 1-800-22-CLASS.

Bloomfield 1972, 1-800-22-CLASS.

Bloomfield June 1943, Helen Flannery, 66 Bloomfield High School, 160 Broad St., Bloomfield, 07003.

Nutley 1983, November 1993. For information, call Danny Geltrude, 661-1636; Ellen Travers, 661-2815; Jodi Mastronardi, 272-9665; Jeanette Paterno, (908) 852-3888; Joy Tolve, 284-1949 or Sandy Paterson, 661-0684.

West Side, Newark, 1967, Jan. 23, Westwood, Garwood. WSHS '67, P.O. Box 694, So. Plainfield, 07080.

Support Groups...

Narcotics Anonymous meeting list: BELLEVILLE: Monday, 8 p.m., Fewsmith Presbyterian Church, Union Ave. and Little St. Openbook/discussion meeting; Tuesday, 8 p.m., Clara Maass Medical Center, 1 Franklin Ave., Branch Brook Room, Education Center. Men's meeting. Open/discussion; Thursday, 8 p.m., Fewsmith Presbyterian Church, Union Ave. and Little St. Open/discussion meeting; Friday, 8 p.m., St. Peter's Church, rear basement, Williams St. Open/discussion. NUTLEY: Monday, 7:30 p.m., St. Paul's Congregational Church, Franklin Ave. and St. Paul's Place. Closed/discussion meeting. Open to addicts and those who think they have a problem with drugs; Tuesday, 7:30 p.m., Grace Episcopal Church, 200 Highfield Lane. Women's meeting. Topic meeting/open discussion; Wednesday, 8 p.m., Grace Episcopal. Closed/discussion. Open to addicts and those who think they have a problem with drugs.

Rational Recovery, a self-help group for substance dependency, non-religious, non-12 step. Based on self-reliance. 8 p.m. Tuesdays, Montclair YWCA, 159 Glenridge Ave., second floor boardroom. For information, call 759-1316 or 538-1590.

Victim/family survivors of auto related crashes, sponsored by Mothers Against Drunk Drivers, second and fourth Mondays, St. Mark's Church, 45 Main St., West Orange. For information, call 344-4329.

Anorexia, nervous, bulimia, compulsive eating problems. For information, call 1-800-624-2268.

Drug addicts, 7:30 p.m. Wednesdays, Christian Faith Center, 393 Washington Ave., Belleville.

Catastrophic illness support group, 6 to 7:30 p.m. first and third Tuesdays, The Hospice, 34 Label St., Montclair. Separate sessions for families and patients. For more information, call 783-7879.

New Jersey Chapter of NAAFA (National Association to Advance Fat Acceptance, social events, human rights information, monthly newsletter. For more information, write P.O. Box 110203, Nutley, 07110 or call 667-2957.



The right people

TO DO BUSINESS WITH! BUSINESS CARD DIRECTORY

KINDLY CLIP AND SAVE THESE CARDS FOR FUTURE REFERENCE

PAINTER

Interior / Exterior
Homes / Business

Will Also Paint Paneling

* Free Estimates *

VERY REASONABLE RATES

Call Mike

997-1412

CHARMING LADY

Beauty Salon

144 Chestnut St.

Nutley

Complete Care and Coloring
Specializing in Perms and Cuts
to suit your special look

667-2133 appt. only

Laura Laino

BILL'S

GUTTER SERVICE

- Gutters & Leaders Cleaned and Flushed
- Repairs and Installation
- Quality Screening • Tree Trimming

CALL

338-0448

ALL WORK GUARANTEED



201 773 0078

Armando Auto Body

Body and Fender Repair • Collision Work
INSURANCE ESTIMATES
TOWING SERVICE

801 803 Main Avenue

Passaic, NJ 07055



Grassano & Company

Certified Public Accountants

Tax Preparation - Personal & Business
Accounting & Consulting Services

ROSEMARY MAROTTI
SENIOR ACCOUNTANT / MANAGER

351 FRANKLIN AVENUE • NUTLEY, NJ 07110
TEL: (201) 235-1743 • FAX: (201) 235-8420

Fully
Insured

Bartender
Available



PROFESSIONAL D.J. SERVICES

MUSIC FOR ALL
OCCASIONS
• Weddings
• Private Parties
• Company Functions

ANTHONY & LINDA LUONGO
North Jersey CALL:
• (201) 228-0369 •
South Jersey CALL:
• (908) 269-9247 •

J.P. Clarke

Heating

Air Conditioning

Sales • Service • Installation

Nutley, NJ

(201) 284-1343

J. Coppola & Sons, Inc.

EST. 1942 48 Yrs. Exp.

Aluminum and Vinyl Siding
Roofs / Doors / Additions
Repairs / Windows / Gutters

429-9266

FULLY INSURED

Systematic Carpet Cleaning

\$13.50 per room

Steamed Cleaned

Shampoo & Steam Deep Cleaning

284-0845

SHOCKED BY HIGH WINDOW PRICES?

Don't buy ANY replacement windows until you get my price!
Deal direct with owner. No salesman's commission. NO
pressure. NO gimmicks.

\$100 OFF on Every Window and Door.
TOP QUALITY hermetically sealed vinyl windows in over
100,000 N.J. installations. Free estimates. Life time
guarantee. Low prices. EXPERT one-day No mess installa-
tions. Custom built to size.

TRUE THERMAL WINDOW Co., Inc.
BILL KEARNEY

201-763-7672 or 1-800-696-2061

Fully Insured

Licensed

Sincerely Yours

FRUIT BASKETS & GIFT CENTER

397 Centre St., Nutley, • 235-0345

WIDE VARIETY GIFT BASKETS FOR ALL OCCASIONS

Fantastic gift items such as

• Vases • Balloons • Collectibles • Silk Flowers
• Plush Animals

WE DELIVER LOCALLY & SHIP NATIONWIDE

RIVERA & RIVERA

TAX PREPARING ACCOUNTING

- Income Tax Preparation
- Individual & Business
- Electronic Filing
- Fax Service
- Notary Public

18 Yrs. Experience

751-4866

528 Union Ave., Belleville

CALL: 667-3000 TO HAVE YOUR BUSINESS CARD INCLUDED EACH MONTH

Maria Gurrera bride of John Joseph Kane

Maria Gurrera, daughter of Mr. and Mrs. Jack Gurrera of Belleville, became the bride recently of John Joseph Kane, son of Mr. and Mrs. James Kane of Belleville.

The Rev. Edward Haber performed the ceremony in St. Peter's Church, Belleville. A reception followed at The Fiesta, Wood-ridge.

Escorted by her father, the bride wore a lace and pearl trimmed gown with an illusion neckline and long leg-o-mutton sleeves. A crystal, pearl and floral headpiece held her veil and she carried pink roses and calla lilies.

Jacqueline Gurrera of Belleville was her sister's maid of honor. Bridesmaids included Mary Freda, Pamela Peslis, Sandy Kane, Mia Nardone and Diane Tramontana. Flower girl was Jennifer McManus.

They were attired in teal satin and velvet gowns, wore flowers in their hair and carried white calla lilies.

Richard Tramutola of Belleville served as best man. Ushering were Bob Kern, Robert Kane, Tom Kane, Jim Kane and Salvatore Freda. James Patrick Kane was ringbearer.

Mrs. Gurrera chose a royal blue gown beaded with silver while the groom's mother was in a satin and velvet deep maroon gown.

Mrs. Kane is an accountant with State Farm Insurance Co., Wayne.

Mr. Kane is a computer operator with ADP, Clifton.

The couple honeymooned in St. Maarten following the Feb. 22 nuptials. They have made their home in Little Falls.



Lisa Scavone — Robert Cutalo

Lisa Scavone to wed Robert A. Cutalo Jr.

Mr. and Mrs. John Scavone of Belleville announce the engagement of their daughter, Lisa Marie, to Robert Anthony Cutalo Jr., son of Mr. and Mrs. Robert Cutalo, also of Belleville.

The troth was made known Dec. 4. The wedding is planned for

September 1994.

Miss Scavone, an alumna of Belleville High School, is with Montclair Plastic Surgery Center.

Mr. Cutalo, also a Belleville High School graduate, is with RC Home Improvements.



Mr. and Mrs. John Kane — nee Maria Gurrera

Bereavement support groups offered by The Hospice, Inc.

A number of new groups to help people deal with the loss of a loved one are offered by The Hospice, Inc., 3 High St., Glen Ridge. Bereavement support groups are made available by The Hospice, Inc. to families and friends who have experienced a loss due to illness or sudden death.

Bereavement groups are offered both in the day and evening to meet the needs of the participants. The safe atmosphere and understanding of support groups offer the bereaved the opportunity for acceptance and personal growth. The group experience offers the opportunity for one to share the pain, fears and frustrations after the death of a loved one.

Groups at The Hospice, Inc. succeed because of the resources, experiences and strength of their

members and the professionalism of The Hospice staff. There are no fees for support groups but contributions are gratefully accepted.

New bereavement groups begin in January and meet throughout the year. Adult bereavement support groups meet in the day on Wednesdays and Monday and Wednesday evenings. The Hospice has groups for families that meet in the early afternoons. Art therapy is the primary medium used by the therapist working with the children. In parents' groups, parents learn how to support their grieving child and receive support from one another.

Anyone who would like to register for a group is invited to call Estelle D'Costa, director of Counseling and Social Services at 429-0300.

Roche Retirees elect slate

Members of the Hoffmann-La Roche Retirees elected a new slate of officers for the coming year.

They include Lyn Nelson, president; Arthur Koch, vice-president; Trudy Traenkle, secretary; John Powell, treasurer and Al Feddock, financial secretary.

Trustees include Angelina Pugliese, hospitality; George Crowell, house; Olga Buchko and Grace Deptula, membership; Tom Beardsmore, publicity; Phyllis Waller, sunshine and Eugene Carcreff, 75/25.

The annual Christmas party was attended by 490 "hardy" people who braved a winter storm. The food of the 20 "no-shows" was

donated to a local food bank.

The first meeting of the year will be held 1 p.m. Jan. 9 in the second floor cafeteria. Meetings are held on the second Saturday of each month except for July, August and December. The board meeting begins at 11:30 a.m. Music and entertainment Jan. 9 will be provided by the Apache Twins who will sing and play guitars. Refreshments and coffee follow.

Jan. 11, Roche Retirees and their guests will be going to Show Boat Casino in Atlantic City. Three buses will leave from the Montclair parking lot. Arrangements are under the direction of Al Feddock.

Vessichelli-Sindle troth is announced

Alicia Vessichelli — Michael Sindle

Mrs. Gail Goi of Belleville announces the engagement of her daughter, Alicia Vessichelli, to Michael Sindle, son of Mr. and Mrs. Louis Sindle of Bayonne.

The wedding is planned for Nov. 13.

Miss Vessichelli, a graduate of

Belleville High School, is an inventory controller with Bob Ciasulli Auto Mall.

Mr. Sindle, an alumnus of Marist High School, Bayonne and St. Peter's College, Jersey City, is an accountant.

Sisterhood Sabbath Sunday at Congregation Ahavath Achim

Sisterhood of Congregation Ahavath Achim of Belleville will hold its Sisterhood Sabbath Weekend on Friday, Jan. 15 and Saturday, Jan. 16. A sabbath supper will be served 6:30 p.m. Friday evening in Sisterhood Hall at the Synagogue, followed by Sisterhood Sabbath services in the chapel at 8:30 p.m.

Following the services, an Oneg Shabbat will be hosted by Sisterhood.

Sisterhood officers and members will take part in the services Friday night and in sabbath services on Saturday morning at 9 a.m.

A luncheon kiddush will follow sabbath services on Saturday, Jan. 16.

Mrs. Frieda Berkowitz is chairperson for the sabbath supper.

Sisterhood officers include

Frieda Berkowitz, Clara Creditor and Hannah Fersko, presidium; Anna Beilin, financial secretary; Leona Schreier, recording secretary; Janet Fuchs, corresponding secretary and Estelle Zohn, treasurer.

Berkowitz is Sisterhood president for the month of January. Rabbi Kenneth Simkes is spiritual leader of the congregation.

The Sisterhood of Congregation Ahavath Achim is affiliated with the Women's League for Conservative Judaism, the national organization of synagogue women of the Conservative movement. Women's League for Conservative Judaism is celebrating its 75th anniversary this year, and will be honored at the Sisterhood Sabbath services.



AWARD WINNERS — Court Gratia 751, Catholic Daughters of the Americas, announces the winners of its annual poetry contest. The announcement was made by education chairpersons Agnes Liddell and Marie Bigley. Pictured above, Agnes Liddell; Maeve Sheehan, fifth grader at Good Shepherd Academy who placed first in Division I; Jennifer DeAngelo, recent graduate of former Holy Family School, now known as Good Shepherd Academy, first place in Division II; Sr. Irma Papaleo, principal of Good Shepherd. In the background, Mrs. Margaret Sheehan of Nutley and Louis DeAngelo of Belleville. Winners received a U.S. Savings Bond.

SINUS CARE GROUP

State of The Art Treatment For Nasal and Sinus Disease

DIAL 66-SINUS 667-4687

Bruce E. Gordon M.D. Arthur I. Lester M.D.

562 Kingsland St., Nutley 235-1400
5 Franklin Ave., Belleville 759-4005
39 Seely Ave., Kearny 997-2347

Does Your Heart Good.

EXERCISE

American Heart Association

ADVERTISE!

NEW JERSEY UROLOGY ASSOCIATES, P.A.
LOUIS J. DI BELLA JR., M.D. - IRA D. TANZER, M.D.
DIPLOMATES AMERICAN BOARD OF UROLOGY

We are participating physicians in the Medicare Program and accept assignment for all office visits, consultations, and surgery.

OUR PRACTICE ENCOMPASSES THE FOLLOWING:

- Kidney, Bladder and Prostate Surgery including Laser Prostatectomy
- All Urologic Cancers
- Stone Disease - both Medical and Surgical Treatment Laser Lithotripsy and Shock-wave Lithotripsy at The Stone Center of New Jersey in Newark.
- Infertility
- Treatment of Impotence (with insertion of penile Prosthesis)
- Treatment of Urinary Tract Infection
- Cystoscopy and Vasectomy
- Prostatic Ultrasound

TWO CONVENIENT OFFICE LOCATIONS

180 Franklin Ave.
NUTLEY, NJ
667-5666

17 Sylvan St.
RUTHERFORD, NJ
460-7410

PRICES CUT & FROZEN!

An exclusive offer for our
Grand Union shoppers

CRANBERRY
VISIONS NON-STICK
COOKWARE
BY CORNING



Grand Union has sharply cut prices on hundreds of items you use most frequently - And has frozen those prices, now 'Til Easter! Look for these signs for sharply cut, frozen prices that will really save you money!

Fresh Grain Fed Center Cut Ultra Trim Pork Loin

**Boneless
Pork Chops**

Lb. **2⁹⁹**

Significant Source of Vitamin C

**Fresh
Broccoli**

Large
Size

Bunch **99¢**

Assorted Flavors - Frozen Yogurt or

**Turkey Hill
Ice Cream**

2^{\$5}
Half
Gal.
Cont.

'TIL
EASTER

Regular

**Apple Dandy
Apple Juice**

Half-
Gal.
Btl.

1²⁹

'TIL
EASTER

Frozen

**Andrea
Cheese Ravioli**

13-oz.
Pkg.

99¢

'TIL
EASTER

Farmland - Chilled from Concentrate

**Nature's Harvest
Orange Juice**

2^{\$3}
Half
Gal.
Cont.

'TIL
EASTER

Whole Peeled or

**Hunt's
Crushed Tomatoes**

28-oz.
Can

69¢

'TIL
EASTER

Regular or Diet

**Slice or Mt. Dew
Soda**

2-Liter
Btl.
Plus Deposit
where req.

99¢

'TIL
EASTER

SUPER COUPON

62¢
NYR CCI

For All Coffee Makers

**Maxwell House
Master Blend Coffee**

One
11.5-oz. Can

99¢

With This Coupon And Purchase Of \$5.00 Or More. Coupon
Good Jan. 10 Thru Jan. 16. Limit One Coupon Per Family.

**GRAND
UNION**

SUPER COUPON

(601)

Solid Pack in Oil or Water

**Chicken of the Sea
White Tuna**

One
6.12-oz. Can

89¢

With This Coupon And Purchase Of \$5.00 Or More. Coupon
Good Jan. 10 Thru Jan. 16. Limit One Coupon Per Family.

**GRAND
UNION**

SUPER COUPON

(603)

Regular or Diet Schweppes, Mug Root Beer
or Cream, Caffeine Free Pepsi or

**Pepsi-Cola
or Diet Pepsi**

One
2-Liter Btl.

79¢

With This Coupon And Purchase Of \$5.00 Or More. Coupon
Good Jan. 10 Thru Jan. 16. Limit One Coupon Per Family.

**GRAND
UNION**

GRAND UNION

Prices effective Sunday, Jan. 10 thru Saturday, Jan. 16 at the Grand Union Food Market. In order to assure a sufficient quantity of sale items for all our customers we reserve the right to limit sale to 3 packages of any item unless noted. Not responsible for typographical errors. For consumer information or assistance call toll free, 1-800-221-1835.

SPORTS

BUC SHOTS



We start this week with a little heat (good natured) toward one Chris "Mad Dog" Russo, the WFAN afternoon DJ who stars with the nearly legendary Mike Francesca in the famous "Mike and the Mad Dog" show.

On last Tuesday's show, Chris interviewed Dusty Baker about a book he later had just released. After the interview, Mike and Chris got into a conversation about an L.A. Dodger-San Francisco Giant game in the early 70's in which the Giants rallied in the late innings thanks to a Bobby Bonds grand slam homer.

Mike didn't remember the game, but Chris, a die hard Giant fan, started talking about the contest but didn't remember the year, or month, in which it was played.

I decided to call the station and talk to Chris about the situation, since I knew exactly which game he was talking about. After a few busy signals, I got through about 4:10 p.m. and didn't wait long until Chris got on the phone.

I told Chris the game was played in the 1973 season. Chris asked me if I knew the date. I told him I didn't know the exact date, but was pretty sure the game was played on Labor Day Night, 1973. It was featured on NBC's Monday night game of the week.

Give Chris some credit. He knew practically the entire scenario of the Giant rally, he even knew who the Dodger pitcher was that gave up the homer to Bonds.

A few hours later, while driving home, Chris was applauding himself for not only knowing the details of the game, but knowing the year and date the game was played!

Not!

By the way Chris, a few more notes about the stretch run of the 1973 baseball season. My Cardinals would have won the N.L. East that season, easily, had Bob Gibson not blown out his knee in a game against the Mets at Shea Stadium in late July.

I was at that game and will never forget that contest. Gibson missed the next six weeks of the season and returned in late September. Met fans will remember their team came back and won the N.L. East with an 82-79 record. The Cards finished second, 81-81 and 1 1/2 games out of first.

With Gibson, who was still a pretty effective hurler in '73, in the lineup for August and September, I'm pretty sure the Cards would have won at least two more games than they did. St. Louis was in first place by a comfortable margin in late July when Gibson went down.

Anyway, I enjoy Chris and Mike's show very much. It's a nice way to drive home and it's fun to get on their case once in a while. Since Chris is pulling in somewhere in the area of \$350,000.00 a year, he can take a little ribbing from me.

DEVILS OFF TO 3-0 START

The Division 3 Devils of the Belleville Soccer Association are off to a 3-0 start in the indoor soccer season. The Devils compete in the United Indoor Soccer League at William Paterson College Rec Center.

The first win came against a good Kearny team. Nick Colucci scored two goals to give Belleville a 2-0 lead. Kearny battled back to tie the game but the Devils prevailed on a late goal by Neal Ventola.

Tom Ranucci, Dan Bartosiewicz and Eric Guevara contributed to a strong pressing midfield, while the defense was led by strong play from goalie Lawrence Martin and defenders Nick Andreottola and Anthony Corino.

The second game was a 5 zip win over the Wyckoff Torpedoes. Wyckoff pressed the Devils for hte entire game, but Belleville was able to find the net.

Ventola scored twice while Colucci, Ranucci and Bartosiewicz had one goal each. The defense was led by Martin, who earned his first shutout. Guevara, Andreottola and Corino all played strong defense.

In the third game, the Devils rallied for a 7-2 win over the Pascack Arsenal. Once again, Belleville took a 2-0 lead with Colucci scoring both goals. The Arsenal battled back, scoring twice and narrowing the Devil lead to 3-2.

The Devils broke it open with four goals to seal the victory. Colucci ended the game with the hat trick whiel Ranucci and Ventola had two goals each.

Defensively, Martin, Ventola, Corino, Guevara and Andreottola excelled once again.

The Devils are sponsored by the BMAP Corp of East Newark. The team is coached by Joe Colucci and Antero Martin.

The team will take on West Paterson on January 16, Wyckoff on January 17, Glen Ridge on the 23rd of January, Clifton on the 24th and Closter on February 14.

LAST WEEKS QUIZ

San Diego jumped out to a 24-0 lead before Miami staged the comeback. Miami led 38-31 in the fourth quarter before San Diego came back to tie on a TD pass by Dan Fouts to James Brooks.

Rolf Bernerska kicked the winning field goal for the Chargers in OT. Kellen Winslow blocked a field goal in the overtime to keep San Diego in the game. San Diego played at Cincinnati the following week and lost the Bengals, 27-7 in the AFC title game. The contest was played in a minus 59 degree wind chill factor.

FOR THIS WEEK

When was the last time the Miami Dolphins made it to the Super Bowl? Who was the Dolphins quarterback that year? Who did Miami play in the Super Bowl? What is Don Shula's total super bowl record?

Four gold medals in lower weights

Wrestlers excel at Minuteman

By Joe Piegara

During the middle and late 1980's, Belleville's wrestling team was blessed with four of New Jersey's most gifted athletes. Their names were Mike Iuliano, John Stampone, Armando Nardone and Joe Cerreto.

They were teammates for three seasons and ran up a staggering total of 366 lifetime collective victories. So great were their accomplishments, they were dubbed "Murderer's Row" by one of the North Jersey newspapers.

All four have gone off to college and are now young men. They have left behind a legacy of wrestling excellence which has never been equalled. Until maybe, this year.

A new foursome has come to town, and while they still are not "Murderer's Row," they may well be before they graduate high school. Meet John Perna (sophomore-103 pounds), Isaiah Cardinale (junior-112 pounds), Joshua Cardinale (senior-119 pounds) and Mark Bianchini (junior-125 pounds).

All four won first place trophies this past weekend at the 10th annual Elizabeth Minuteman Classic.

Already this foursome has established themselves as the heart and soul of the 1992-93 squad.

Perna, who won 120 matches as a recreation standout and a state championship last year as a freshman, opened the tournament for Belleville by pinning Juan Laracuciente of Elizabeth at 1:36 of the first period. John won the gold medal by scoring a 15-0 Technical Fall over John Weinlen of Central Regional.

Now at 8-0 with seven pins, Perna has already established himself as the man to beat in the District 14 championships in February.

Isaiah Cardinale, wrestling in the 112 pound division, won the next gold medal for Belleville High School.

A winner in this tournament last year at the same weight, Cardinale has yet to be tested this season. A pin in his first match over Pedro Oliveira of Elizabeth took only

1:35. Then Isaiah coasted to a 16-1 Technical Fall victory over Long Branch's Jamal Watts in the championship bout.

With an 8-0 record and six pins, Isaiah (along with brother Joshua) is one of the most feared lightweights in North Jersey.

Member No. 3 of the new "Fear-some Foursome" is senior co-captain Joshua Cardinale. This is the third consecutive year Josh has won at the Minuteman Classic and he was never as dominant as this past Saturday.

Using only 54 seconds, Cardinale hammered Jack Cerbo of Central Regional, then spent only 42 seconds to pin Long Branch's Antonio Gonzales. The two wins brought Josh's record to 6-1 with five pins.

The victory at Elizabeth gave Joshua 68 career wins, tying him with Chris Musmanno and Ralph Perna for ninth place on the all time win list.

Fourth in line in the new "Fear-some Foursome" is cleanup hitter Mark Bianchini. Wrestling as a 125 pounder, Mark won two squeakers in the Minuteman Classic to win his first every varsity tournament.

Bianchini has the least experience of the four in terms of years wrestling, but he is easily the most improved over the past twelve months.

He showed that improvement by winning his opening bout 10-8, over Joe Cala of Central Regional. Then Mark pulled a sweet upset by decisioning Eric Jacquish of Somerville in the finals, scoring back points in the final 30 seconds. The score was 8-3, and Bianchini's

record now stands at 7-1 for the season.

Belleville High School had two other medal winners in the tournament, Carlo Ritacco at 145 and Darren Peirson at 135.

Team captain Ritacco finished second, losing to Somerville's Rodney Vanness in the finals. Vanness was the Outstanding Wrestler in the tourney as voted by the coaches.

Peirson placed third, losing to champion Jason Camerford of Long Branch in the semifinal round.

As team, BHS placed a very respectable third, with a point total of 116. Somerville ran away with the title, totalling 187 points, while Long Branch was second with 130 1/2. North Bergen was fourth with 70 1/2, Central Regional was fifth with 69, and Elizabeth was sixth with 50 points.

Southern Regional and St. Joseph's of Metuchen were both in the opening field, but each school withdrew from the event only days before it was to take place. It was the second year in a row Southern Regional backed out with so short a notice.

The complete list of winners in the 10th annual Elizabeth Minuteman Classic: 103-John Perna-Belleville; 112-Isiah Cardinale-Belleville; 119-Joshua Cardinale-Belleville; 125-Mark Bianchini-Belleville; 130-Mike McNeil-North Bergen; 135-Jason Camerford-Long Branch; 140-Craig Mammano-Long Branch; 145-Rodney Vanness-Somerville; 152-Jason Kinney-Somerville; 160-

(continued on page 12)

Lady Bucs defeated by Nutley and I. Heart

By Mike Lamberti

The Belleville girls' basketball team had a less than memorable week on the hardwood, losing to Immaculate Heart 69-32 and Nutley 67-33.

The two defeats lowered Belleville's record to 2-4. Cheryl Marion's group battled Columbia and Paramus Catholic earlier this week. This afternoon, it's off to Teaneck in a 4:30 p.m. start.

Marion watched in frustration as her team committed too many turnovers against strong NNJIL competition.

Against Immaculate Heart, the Lady Bucs trailed 19-8 after one quarter and 44-12 by halftime. It was 60-25 after three quarters with the fourth quarter low scoring.

Andrea Curran led Belleville with ten points. Liz Ramirez scored seven, Yanina Calvi and Mary Campbell had four each, Adrienne Walsh tallied three and Kristin Caputo and Colleen Mannion scored two each.

It wasn't much better last Thursday evening when the Lady Bucs played at Nutley. The Raiderettes led 18-10 after one quarter and 34-18 at the half. Any thoughts of a comeback in the second half were quickly dismissed when Nutley scored the first ten points of the

third quarter and outscored Belleville 24-4 in the frame.

Belleville did outscore Nutley 11-9 in the final frame, but it wasn't enough to mount a rally.

Once again, Curran led the Belleville attack with ten points. Curran, a sophomore, is recovering from the flu which hampered her during the Christmas tournament.

Mannion tallied eight as she attempts to get her offensive game back in high gear. Calvi scored five, Ramirez and Campbell finished with four each and Caputo had two.

Belleville faced a tough week, with Columbia and Paramus Catholic expected to field good teams this season. This afternoon's game at Teaneck will also be a good test.

Teaneck is usually one of the stronger teams in Bergen County. Last year, Belleville ended a long dry spell against the High-aywomen when the Lady Bucs won at Teaneck in early February. Prior to that game, Teaneck had a 17-0 record against Belleville, dating back to January of 1984.

Looking ahead, Belleville will have to play Immaculate Heart and Nutley on January 28 and February 2 respectively. Both of those games will be at the friendly confines of Buccaneer Garden.

Hall of Fame to welcome seven, team

By Mike Lamberti

Seven individuals and one team will be inducted into the Belleville Hall of Fame at the annual dinner set for Friday, February 26, 1993 at the Chandelier.

The seven inductees are Carolann Salerno, the late William Bennett, Dave Rothwell, Richard Ruffalo, Brian Cook, Desiree Johansen and Michael Gibbons. In addition, the 1982 girls' crew team, which captured a national championship, will also be inducted.

The Hall of Fame dinner usually draws a large turnout and this year should be no exception, especially since the dinner has not been held since late 1990. There are many familiar names on the list and over the next few weeks, we'll be profiling each inductee.

Let's start this week with Salerno, a 1981 graduate of Belleville High School. During her high school career, Salerno excelled for the tennis and basketball teams.

She was the first player in Belleville High School history to compete on the varsity level as a freshman. She was also the first four letterwoman in tennis at Belleville.

Salerno became the first Belleville girl to advance to the round of 16 in the state tourney. She was later recognized by the Belleville Varsity Club for her outstanding high school career.

On the basketball court, Salerno earned three letters and was co-

captain in her junior year and captain in her senior campaign.

After being graduated from Belleville High, she attended Rutgers University and played collegiate tennis for two years.

This writer has many memories of Carolann Salerno. Mostly, it was her hard work ethic on the basketball court and her outstanding play on the boards. A guard, Salerno wasn't afraid to mix it up under the boards and "number 12" is certainly a deserving member of the Hall of Fame.

Any fan of Belleville sports is certainly familiar with the nearly legendary Richard Ruffalo.

Ruffalo, already a member of the Bloomfield Hall of Fame, is one of the few inductees in the Belleville Hall of Fame that did not graduate from Belleville High School.

Ruffalo attended Bloomfield High and later, Montclair State College. In the Fall of 1974, he arrived at Belleville High School as a science teacher. He was also the cross country and track coach and made an immediate impact when he guided the cross country team to a 7-5 record and the track team to an 8-6 mark in his first year of coaching.

What made that feat so remarkable was both programs had struggled and had not produced a winning season for the past 15 years prior to the '74-'75 season.

Ruffalo's coaching accomplishments pale in comparison to his remarkable success as a blind athlete.

You must remember that "Coach Roof" began his coaching career 18 years ago as a man with good eyesight. He would drive to practices and, on most occasions, chase his runners around the course and threaten them with bodily harm (just kidding) if we didn't give 100 percent in a practice. (I say that from experience because Ruffalo was my coach in cross country and track from 1974 through '76).

In 1980, Ruffalo's eyesight began to deteriorate noticeably. By 1983 he was legally blind. The following year, he began to compete as a disabled athlete in track and field and produced some phenomenal results. When Ruffalo was a collegian, he was a standout javelin thrower at Montclair State College.

As a disabled athlete, he has competed as a javelin, shot put and discus thrower. Ruffalo has earned medals at the Olympics for the Disabled in 1988 and again last summer.

Ruffalo married back in 1989 and is the proud father of a daughter who is now two years old. His life seems to be going very well and he is certainly a story of determination, a man who would not let a handicap slow down his life's dreams.

Brian Cook was graduated from

Hall of Fame, Montclair State football coach Rich Giancola, Seton Hall mens' basketball coach P.J. Carlesimo and other notables.

The National Football Foundation is a nationwide organization with purposes including promotion of the game of football as an integral and vital part of the educational process, encouragement of playing the game at all levels and the establishment of the proper incentives and ideals for American youth consistent with high standards of sportsmanship among the players.

Jack Davies, the standout football coach at Butler and Montclair High School is the current president of the Essex County Chapter.

Belleville High School in 1984. He comes from a fine athletic family. Two older brothers excelled at Belleville High School in the early 1980's.

Cook competed in three varsity sports; soccer, basketball and baseball. It was soccer where Cook really excelled. A goalie, Cook holds the school record for season shutouts, career shutouts, most games played, lowest average for goals against, highest career saves and most saves in a game.

He was named to the third team, all state and was an all county and all league performer.

Cook attended NJIT was named team captain in his senior year. He holds school records for most season shutouts and most career shutouts. He was awarded the NJIT Alumni Outstanding Athlete Award.

He was an all league, all region, all east coast, all state and most impressively, All American performer in college. He was also named to the North-South Senior All Star team.

Cook played high school soccer for Tony DeAquino, high school hoops for the nearly famous Joe Papasidero and was a baseball player for Ralph LaConte. As is the case with all the inductees, Cook is a most deserving recipient.

Next week, we'll continue our look at the inductees for 1993.

DeMassi PONTIAC

IN LYNDBURST

LOU DeMASSI'S DISCOUNT CORNER SINCE 1937

939-6100

EVERY DAY LOW LEASE PRICES ALL MAKES & MODELS
★★★★ FIVE STAR SERVICE EXCELLENCE AWARD WINNER

HUGE SELECTION!
EVERY MODEL.. EVERY COLOR.. EVERY OPTION!
OUT THEY GO!!

OVERSTOCKED

DON'T GET CAUGHT IN THE HIGHWAY HASSLE!

ELIMINATION

DISCOUNTED PRICES EVERY '93 PONTIAC IN STOCK!

AS LOW AS

5.9% APR

FINANCING

Select New Models If Qualified

BUY OR LEASE!

NEW 1993	NEW 1993	NEW 1993	NEW 1993
<p>GRAND PRIX LE SEDAN</p> <p>PONTIAC—V6 eng., 4 speed auto trans., power/door/trunk/wind., auto dr. lks., 15" alloy whls., rr del., mags., va wipers, cruise, WH, am/fm cass. \$36K/748. VIN# PP2B1884. MSRP: \$17,614. \$300 ref one dep. Purchase option = \$6375. Total cost = \$8089.00. Price includes \$2000 Factory Rebate.</p>	<p>GRAND AM SE COUPE</p> <p>PONTIAC—4 cyl eng., auto trans., power door/mult-lk brks/winds., auto dr lks., 15" whit. am/fm cass., air cond., WH. Stk#P243. VIN#PC767183. MSRP: \$15,327. \$300 ref one dep. Purchase option = \$5615. Total cost = \$5875. Price includes \$2000 Factory Rebate & \$400 First Time Buyers Rebate.</p>	<p>SUNBIRD LE SEDAN</p> <p>PONTIAC—4 cyl eng., auto trans., power/door/mult-lk brks., auto dr lks., mags., rr del., am/fm cass., air cond., tint gls., sport mirrors. Stk#P216. VIN#F7521758. MSRP: \$11,628. \$300 ref one dep. Purchase option = \$3871. Total cost = \$7067.00. Price includes \$400 First Time Buyers Rebate.</p>	<p>BONNEVILLE SE</p> <p>PONTIAC—V6 eng., 4 spd auto trans., air cond., power/door/mult-lk brks/winds/lks./ant/theft/mirrors/trunk rel., air bag, tint gls., cust trim grp., rr del., 16" alum whls., Hurst emery, cruise, sunroof, am/fm cass. Stk#748. VIN#AP123334. MSRP: \$21,900. \$400 ref one dep. Purchase option = \$7000. Total cost = \$12,285.00. Price includes \$2000 Factory Rebate.</p>
<p>BUY FOR</p> <h2>\$15,257</h2> <p>LEASE FOR</p> <h2>\$201.95</h2> <p>PER MO.</p>	<p>BUY FOR</p> <h2>\$13,327</h2> <p>LEASE FOR</p> <h2>\$187.95</h2> <p>PER MO.</p>	<p>BUY FOR</p> <h2>\$10,628</h2> <p>LEASE FOR</p> <h2>\$159.95</h2> <p>PER MO.</p>	<p>BUY FOR</p> <h2>\$19,436</h2> <p>LEASE FOR</p> <h2>\$255.95</h2> <p>PER MO.</p>

Price includes all costs to be paid by consumer, except for licensing, registration & taxes. All above leases are 48 month closed end leases. 15% of MSRP Cap Cost Reduction. 13,750 miles per year; then 10 cents each mile thereafter. First months payment + refundable security deposit due at inception. Lessee responsible for excess wear & tear. Qualified buyers.

DeMassi PONTIAC

PARK AND RIVERSIDE AVENUE, LYNDBURST

YOUR LOCAL PONTIAC DEALER FOR BIGGER SAVINGS! • HOURS: MON.-FRI. 9-9, SAT. TIL 5

FOCUS

On Health

Dr. Sylvia Irwin Offers Cosmetic Dentistry

Many common cosmetic problems such as gaps between teeth, crooked teeth, tilted, chipped, discolored, or stained teeth can now be corrected with new painless techniques.

Bonding can be used to restore teeth by using a tooth colored plastic-like substance (composite resin) to fill in chips, decay, and other defects. The resin is then exposed to a bonding light to dry and harden it, and the tooth can then be smoothed and polished.

Bleaching works on teeth in much the same way as it does on clothes, by lightening stains. A stronger bleaching solution is applied by the dentist directly to the teeth for rapid lightening.

Further lightening is achieved through continued use of a more dilute bleaching solution in specially constructed trays for several more weeks.

Porcelain veneers are hard, tooth-shaded shells bonded onto the front surfaces of teeth in much the same way as false fingernails are applied. Veneers can correct larger problems than bonding alone can - discoloration, misshapen teeth, and more severely damaged teeth. The results of veneering teeth will last for many years.

If you would like further information on any of these techniques please contact Dr. Sylvia Irwin 181 High St., Nutley 667-1567.

SYLVIA L. IRWIN, D.M.D., P.A.

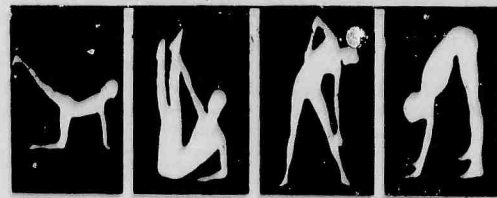


Complete Family Dental Care

- Cosmetic Implants • Restorative Dentistry
- Nitrous Oxide Available • Flexible Hours

Same Day Emergency & Dental Repairs

181 High St. • Nutley • 667-1567



RED BRICK GYM

5-7 Central Ave. East Newark, N.J. 07030

482-8835 or 482-8515

\$35.00 Per Month

Mon-Fri 5:30am-10pm Sat 9am-6pm Sun 9am-5pm

- Friendly Atmosphere • Instructors Available At All Times •
- Diet & Nutrition Counseling Available •
- 20,000 Sq. Ft. Individual Work-Out Areas

Which Include A Full Line Of:

- Nautilus & Free Weights • Life Cycles & Stair Masters • Rowing Machines • Child Care Available • Steam Room, Sauna & Jacuzzi • Private Tanning Beds • Aerobics • Showers, Locker Rooms • Daily Abdominal Classes • Daily Step aerobics and More!

GIFT CERTIFICATES AVAILABLE

3 MONTHS \$100.00

NO INITIAL FEE

With coupon • Offer Exp. 1/31/93 • Not valid with other offers

RED BRICK MEMBERSHIP SPECIAL

\$19.95 Per Month

\$350 A Year

ON A ONE YEAR MEMBERSHIP

MONDAY-FRIDAY 5:30AM-3:00PM SATURDAY-SUNDAY ALL DAY

Cannot be combined with any other offer • 1/31/93 •

NOW AND UNTIL FURTHER NOTICE RED BRICK INVITES YOU TO ONE FREE TRY OUT ANY THURS., FRI. SAT. OR SUNDAY MUST PRESENT COUPON

• Offer Exp. 1/31/93 •

Gerard Cicalese, M.D., P.A. Joseph Parlavacchio, M.D.

*Announces The Grand Opening
Of Their Second Office*

Located at:

382 W. Passaic Ave., Bloomfield, NJ

Evening Hours By Appointment Only

330 Washington Ave., Belleville • 751-4300

West Essex Community Health Svs.

(including West Essex Hospice)
has moved!

Our new address is:

799 Bloomfield Ave.

Verona, New Jersey 07044

201-857-7300 FAX: 201-857-3433

From our new home we will continue to bring you the best in home health care and community health programs.

*When caring counts at home
count on*

West Essex Community Health Svs.

Here's Looking At You In 1993!

WEIGH OF LIFE

- Structured Sensible Food Plan



- Self-Esteem Motivational Counseling

- Behavior Modification Strategies

- Professional Weight Management Counselors

Lose Weight The Safe & Effective "Weigh!"

NOW OPEN IN NUTLEY

VFW Hall 271 Washington Ave.
Every Thursday Starting
January 21, 1993 6:30pm

**FEE: \$2.00 Registration
\$5.00 Weekly Classes**

**CALL FOR INFORMATION
935-6717 after 3:30**

Visit Our Other Locations

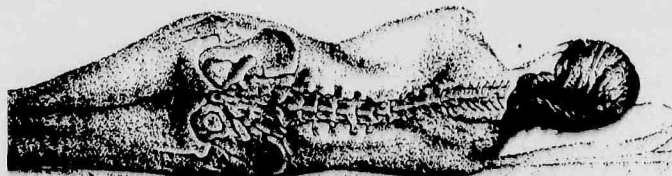
Rutherford
Knights of Columbus
Mon. 6:30pm

Keamy
West Hudson Hospital
Wed. 5pm & 6:30pm
Sat. 9:30am



When you look at the ingredient labels on prepared foods you can be assured that when cottonseed oil is listed, it's a quality product.

TREAT YOUR SPINE KIND AT MEDICAL IMAGING, P.A.



MRI

MAGNETIC RESONANCE IMAGING



Medical Imaging, P.A.
69 Orient Way
Rutherford, NJ 07070
(201) 933-0310
(201) 933-2753 FAX

- FM Stereo - CD - Cassette
- Available While Relaxing During Your Next Exam

- Superb Patient Care
- Highly Trained and Qualified Staff
- Immediate Results

*Give your patients a choice . . .
the RIGHT choice.*

CT - Mammography (ACR Accredited)
Color Ultrasound
X-Ray - Fluoroscopy also available

GOLD'S GYM

A FAMILY FITNESS AND AEROBICS COMPLEX

**IS HOSTING ITS 1ST OPEN HOUSE
ON SAT. JAN. 16, 1993 AT 1:00 PM**

**ALL ARE WELCOME FOR
FREE TOURS, BODY FAT TEST,
BLOOD PRESSURE CHECK AND
MEET OUR FRIENDLY STAFF AND
OWNERS OVER HEALTHY REFRESHMENTS**

**When You Join On Sat. Jan. 16, 1993 We Will Discount
50% OFF INITIATION AND EXTEND ONE FREE MONTH
Towards Your Membership!**

Come Join The Nation's NO. 1. Gold's Gym And Be Part Of The Legend

201-751-6999

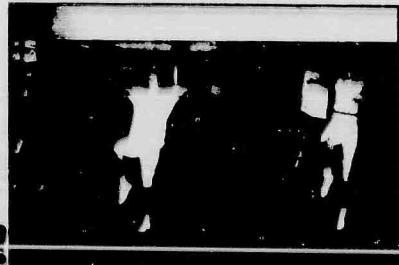
471 Cortlandt Street, Belleville, NJ 07109

Hours: Mon. - Fri. 5:30 AM - 11:00 PM • Sat. 8:00 AM - 6:00 PM • Sun. 8:00 AM - 4:00 PM

NEW YEAR, NEW YOU

But only if you start to do something NOW!

**NOW
Is The
Time
For
FITNESS!**



**Don't
Put
It Off
Any
longer!**

Whether you want to lose weight, firm & tone or relieve stress, there's no better time to get started than now. You don't get results by just thinking about it. The people who feel better and look better started their exercise program last year when they said they would.

(Now it's your turn!)

At Classic we make it easy for you to say, "I can do it". We provide you with Nautilus, Free Weights, Aerobics, Step Classes, Individual One On One Training Sessions, Court Sports, Tanning, Child Care and much, much more. Just call 933-4100 to redeem your coupon and you will be on your way to being the you, you want to be!

Don't Wait! Make today your day to get started!

CALL 933-4100

I Promised I'd do it this year coupons!

CLASSIC
THE ATHLETIC CLUB

In The Meadows
205 Chubb Ave. Lyndhurst
At the intersection
of Routes 3 & 17

\$50.00 off

Any Standard Annual Membership
Not to be combined with any other special

\$19.93

**One Time
Enrollment Fee**

*Based on a monthly dues membership

Obituaries

Emma Regina Stecher

Emma Regina Stecher, 62, of Belleville died on Monday, January 4 at home.

Born in Newark, Miss Stecher lived in Belleville for the past 20 years.

She was a Registered Nurse at St. Barnabas Medical Center in Livingston for 20 years.

Miss Stecher was graduated in

1972 from Felician College in Lodi with a degree in Nursing.

Surviving are her sister, Ursula J., and her brother, Richard L.

A Funeral Mass was offered on Friday, January 8, at St. Mary's Church in Nutley, following the funeral service from the Harrison-Pucci Funeral Home in Nutley.

Angelina Garruto, 83

Angelina Garruto, 83, of Belleville died on Monday, January 4 at home.

Born in Italy, Mrs. Garruto resided many years in Nutley before coming to Belleville 15 years ago. She was a homemaker.

Surviving are her daughter, Helen Vito of Belleville; her son, Sam Garruto of Nutley; her brother,

er, Mario Engargiola of Nutley; her sister, Rose Raia of Brooklyn, New York, and three grandchildren.

A Funeral Mass was offered on Thursday, January 7, at St. Mary's Church in Nutley following the funeral service from the Biondi Funeral Home in Nutley. Interment was at Holy Cross Cemetery.

John N. Mele, 54

John N. Mele, 54, of Belleville died on Friday, January 1 at home.

Born in Newark, Mr. Mele lived most of his life in Belleville.

He was Salesman for Macy's Department Store in Willowbrook Mall, Wayne, for the past 27 years.

Surviving are his wife, the former Johanna G. Ackerman; his daughter, Mrs. Jacqueline Kaufman; his son, John William Mele, and five

sisters, Mrs. Nell Stella, Mrs. Martha Brucato, Mrs. Lee Di Paolo, Miss Rose Mele and Mrs. Norma Amato.

A Funeral Mass was offered on Tuesday, January 5, at St. Peter's Church in Nutley, following the funeral service from the S. W. Brown and Son Funeral Home in Nutley. Interment was at Glendale Cemetery in Bloomfield.

Charles Shrensel, 83

Charles Shrensel, 83, of South Daytona, Florida, died on December 22 at Halifax Medical Center in Daytona Beach, Florida.

Born in Newark, Mr. Shrensel lived in Belleville until he moved to South Daytona 22 years ago.

He operated Harriet's Stationery Store in Belleville for 27 years until his retirement 22 years ago.

Surviving are his wife, Harriet; his daughters, Lynn Shrensel of Chatham and Mrs. Sharon Zadikow of Summit, and two grandchildren.

Funeral services were held on December 24 in the Menorah Chapels at Millburn, in Union Township.

Harriet McIntyre, 85

A Mass for Mrs. Harriet W. McIntyre, 85, of Belleville was offered Jan. 9 in Sacred Heart Church, Bloomfield, after the funeral from the O'Boyle Funeral Home, Bloomfield.

Mrs. McIntyre died Jan. 6 in the

Pleasantview Manor, Vaux Hall.

Born in Maspeth, N.Y., she lived in Bloomfield before moving to Belleville two years ago.

Surviving is a sister, Mrs. Veronica Hayes.

Susan Sullivan, 88

Mrs. Susan Shovelin Sullivan, 88, of Belleville died on Friday, January 8, at Clara Maass Medical Center in Belleville.

Born in County Donegal, Ireland, Mrs. Sullivan lived in New York City before moving to Belleville 50 years ago.

She was employed in Maintenance for International Telephone and Telegraph Corporation in Nutley for many years until her retirement 24 years ago.

Mrs. Sullivan was a member of

the Rosary Society of St. Mary's Church in Nutley.

Surviving are her sisters, Mrs. Mary Crerand, Mrs. Margaret Gallagher and Mrs. Essie McCarron, and her brother, Thomas Shovelin.

The Funeral Mass was offered on Monday, January 11, at St. Mary's Church in Nutley following the funeral service from the S. W. Brown and Son Funeral Home in Nutley. Interment was at Immaculate Conception Cemetery in Montclair.

Anthony Fasano Jr., 64

Anthony Fasano Jr., 64, of Belleville died Jan. 7 in the Clara Maass Medical Center, Belleville.

A Mass was offered Jan. 11 in St. Anthony's Church, Belleville, following the funeral from the Zarro Funeral Home, Bloomfield.

Mr. Fasano had been a chef at the Tree Acres Grill in Lyndhurst for 20 years until 15 years ago. He was an honorary member of Post

299 of the American Legion in Belleville.

Born in Newark, he lived in Belleville for 20 years.

Surviving are his wife, Margaret; a daughter, Linda M.; a brother, Michael; four sisters, Mrs. Dorothy Burns, Mrs. Viola Tulino, Mrs. Lorraine Constantino and Mrs. Marilyn Galasso, and two grandchildren.

Ethel Abel, 89

Memorial services for Mrs. Ethel H. Abel, 89, of Nutley were held Jan. 10 in the Brookdale Baptist Church, Bloomfield. Arrangements were by the S.W. Brown & Son Funeral Home.

Mrs. Abel died Jan. 5 in her home.

She was a 1924 graduate of the St. Barnabas Hospital School of Nursing in Newark. Mrs. Abel also was a

member of the Golden Age Club in Nutley and the Bible Class in the Brookdale Baptist Church.

Born in Bayfield, Wis., she lived in Belleville before moving to Nutley 51 years ago.

Surviving are a son, Richard; two sisters, Mrs. Margaret Snyder and Mrs. Dorothy Brewster; two brothers, Donald and Harry Peterson, and a grandchild.

Roche's Lariam shields U.S. troops

The 28,000 U.S. troops traveling to Somalia as part of Operation Restore Hope will confront more than armed rival factions, widespread famine and 100 degree temperatures — they will also face the risks of a malaria-endemic country.

Because malaria is rampant in Somalia, the U.S. troops being sent to support relief efforts will be taking necessary precautions to minimize the risk of contracting the disease. Roche Laboratories, the prescription drug unit of Hoffman-La Roche, is supplying the U.S. Government with Lariam® (mefloquine hydrochloride/Roche), a medicine effective for the prevention and treatment of some types of malaria.

Malaria is caused by a parasite transmitted by the anopheles

mosquito. For 40 years the drug chloroquine was the standard treatment for malaria prevention. During the past decade, however, malaria parasites resistant to chloroquine have spread around the world.

"Consequently, Lariam now is one of the main drugs recommended for protection against malaria in Sub-Saharan Africa, including Somalia, the interior reaches of South America and in other chloroquine-resistant regions of the malarial belt," said Kent Campbell, M.D., chief, Malaria Branch, Centers for Disease Control and Prevention (CDC).

Originated by the U.S. Army in collaboration with Roche and the World Health Organization, mefloquine HCl became available in tablet form in the United States in 1990.

New officers sworn in at Wanaque Reservoir

Two Newark residents became the first new recruits Friday to be sworn in as patrolman in three years with the Wanaque Reservoir Police Department which oversees facilities of the North Jersey District Water Supply Commission.

Sal Simao, 22, of the Ironbound, and Ryan Maguire, 24, of Forest Hills, will begin a 20-week course at the Bergen County Police Academy on Jan. 19. Both joined the North Jersey Water Commission staff as security inspectors two years ago and edged out several candidates seeking to fill the two police vacancies created by retirements.

Both the new reservoir policemen are part-time college students. Simao, a former assistant buyer and general manager of Shout! stores in Newark and Jersey City, is a political science major at Seton Hall University.

Maguire, an Army reservist called to active duty during Desert Storm, is an honor-roll student at Essex County College where he is studying criminal justice.

"Accept this appointment with honor," said NJDWSC Chairman Robert Rubino of West Caldwell who administered the oaths of office. "Carry out your responsibilities as a policeman with integrity; be proud of yourself, your work and what you represent. And good luck at the Police Academy," Rubino said at the swearing in ceremony held Friday.

The commission's facilities include Monksville Reservoir in Ringwood and West Milford, the Wanaque Reservoir, river diversion pumping stations in Pompton Lakes and Wayne, several water treatment plants, a balancing reservoir in Clifton and a 21-mile long aqueduct which terminates in Newark.

Newark is one of the original contracting municipalities in the Wanaque Reservoir system, not only the largest water supply operation in New Jersey, but the lowest priced at \$338 per million gallons.

Simao, a graduate of Seton Hall Prep, attended New York University and the Fashion Institute of

Technology in Manhattan before enrolling at Seton Hall University. He is a member of both the Center of the Study of the Presidency, a think tank based in Washington, D.C. and New York, and the American Political Science Association. The son of Salvador and Isabel Simao, the new policeman completed a Congressional internship concerned with both domestic and foreign affairs.

While in Washington, D.C., Simao also volunteered with Project Homecoming, a federally funded program to assist Amerasians within the United States. He also was a volunteer with Ashokja, an organization which establishes new businesses in Third World countries, and he frequently volunteered to translate legal documents from Portuguese to English.

Maguire moved to Newark from Nutley two years ago after returning to American shores upon completion of military police work during Desert Storm. A graduate of Nutley High School, he is the son of Mrs. Helen Maguire of Nutley.

Promoted to the rank of sergeant during Desert Storm, Maguire originally joined the U.S. Army in 1987 and was stationed at Fort DeRussy, Hawaii, with the Western Military Police Command.

After his discharge from Army active duty in 1990, Maguire saw his reserve unit activated for Desert Shield. He left for Germany in December 1990 to backup military police units which had been dispatched to Saudi Arabia. Maguire returned to the United States in June 1991 and to his job at the North Jersey District Water Supply Commission as a security inspector. Gov. Jim Florio had signed an executive order protecting state government jobs for those called to duty during the Iraq war.

Others participating in the swearing in ceremonies for Simao and Maguire were Michael Restaino of Rockaway Township, executive director of the NJDWSC; Captain Joseph Ruscica of West Milford, the highest ranking officer with the Wanaque Reservoir Police Dept., and Sgt. Terry Baker of Ringwood.

Valley National, Peoples sign merger agreement

Gerald H. Lipkin, chairman and chief executive of Valley National Bancorp and S. Thomas Aitken, chairman of Peoples Bancorp, Fairfield, jointly announced the signing of a definitive merger agreement.

As previously announced, under the terms of the merger agreement Peoples shareholders will receive approximately .625 shares of Valley stock for each share of Peoples common stock they own, subject to the receipt of a minimum \$14.06 and maximum \$16.56 worth of value in Valley stock. Peoples has approximately 660,000 common

share equivalents outstanding.

In commenting on the signing of the agreement, Lipkin said, "We are now one step closer to adding another attractive community bank to Valley's growing branch system in Northern New Jersey. Peoples will make a great fit and we look forward to completing the transaction in a timely fashion." The \$223 million asset Peoples Bancorp, headquartered in Fairfield, has six additional branches — three in Belleville, two in Bloomfield, and one in Caldwell.

The merger will require the approval of both the Comptroller of the Currency and the Federal Reserve as well as Peoples shareholders.

Valley National, with \$3.1 billion in assets, has added 26 branches through acquisitions since December 1990.



PROFESSIONALLY SPEAKING

The Nutley Sun
Belleville Times
Bloomfield Life



Gerard Cicalese, M.D., P.A.
Joseph Parlavecchio, M.D.
Announces The Grand Opening
Of Their Second Office
Located at:
382 W. Passaic Ave., Bloomfield, NJ
Evening Hours By Appointment Only
330 Washington Ave., Belleville • 751-4300

FOR YOUR FINANCIAL AND TAX NEEDS
Paul Goldman, C.P.A.
• Personal Income Taxes including New York Wage Earners
• Self-employed Individuals
• Corporate Taxes • New Businesses
• Tax Planning
• Estate Accounting

180 WASHINGTON AVE.
BELLEVILLE • 759-7791
"ABOVE FLOWERAMA"

DR. RALPH J. DI MAIO
CHIROPRACTOR
Serving your community for over 13 years
Most insurances provide coverage
751-8805
625 Joralemon St.
Belleville

NUTLEY - KEARNY
OBSTETRICS - GYNECOLOGY
HOWARD GRODER, M.D.
JEFFREY ROSEN, M.D.
HIGH RISK PREGNANCY
INFERTILITY

Nutley Medical Plaza
181 Franklin Avenue
Nutley, N.J. 07110
667-2212

Arlington Medical Building
837 Kearny Avenue
Kearny, N.J. 07032
991-1519

"Serving The Community For 40 Years"

Dial "NO-PAINO"
(667-2466)

Smile Today

J.D. Muglia D.D.S. P.C. F.I.C.D.

10 Franklin Ave.
Nutley, N.J.

Cosmetic & Restorative Dentistry

24 Hr. Emergency Service

Pharmacy Footnotes



Vincent Cozzarelli
Reg. Ph.

ORPHAN DRUGS

A "rare disease", as defined by the National Organization for Rare Diseases, is a medical disorder which afflicts 200,000 or fewer people. There are currently an estimated 20 million individuals who suffer from dwarfism to hemophilia. As large as this total population may be, pharmaceutical companies do not always find it profitable to develop drugs to treat a limited number of people suffering from any single rare disease. To address this problem, The Orphan Drug Act was established in 1983. This legislation provides biotechnology and pharmaceutical companies with financial incentives to develop treatments for rare disorders. Since this law came into effect, 63 new treatments have been developed for more than 73 rare diseases.

For the convenience of our customers, as soon as new drugs become available we handle them at ROSSMORE PHARMACY, 338 Washington Avenue, 759-1968, 759-1956. Convolutions aids are carried including walkers, wheel chairs, crutches and canes. Sale and rentals are available. Open: 9am-10pm daily, 9am-9pm Sundays.

HINT: Since 1983, orphan drugs have been developed to treat infant botulism, sickle cell anemia, severe burns, multiple sclerosis, and a number of cancers.

We build men from the boy up
Join Boy Scouting
a program for boys from 8th - 9th grade
Call 922-2488
9:00AM - 4:30PM
Monday through Friday

Irving Cozzarelli Memorial Home

IN YOUR TIME OF NEED
"A Family Name You Can Trust"



276 Washington Ave.
Belleville
759-1114

TO ADVERTISE YOUR BUSINESS HERE CALL 667-2700.

Especially for kids and their families

The Mini Page

© 1993 by Universal Press Syndicate

By BETTY DEBNAM

Which One Is He Wearing?

The President's Many Hats



I AM READING ABOUT HIS PLAN TO CREATE MORE JOBS.

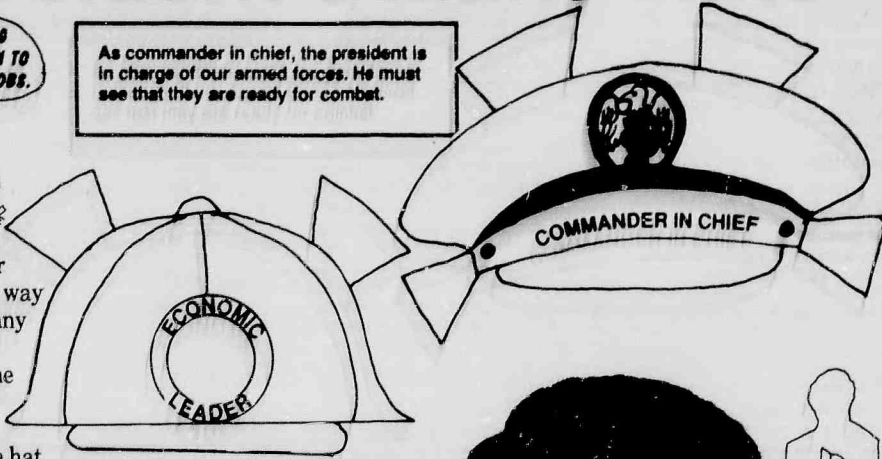
As commander in chief, the president is in charge of our armed forces. He must see that they are ready for combat.

The president doesn't really wear these hats, but this expression is a way of saying that he has a job with many duties.

Cut out President Clinton and the hats he might wear.

Make a president's-jobs display.

Watch the newspaper. Put on the hat that fits the job in the story.



As economic leader, the president has to try to keep prices from going up and up. He also must try to keep our businesses busy and our workers on the job.

On Jan. 20, Bill Clinton becomes our 42nd president.

Each president says a 35-word "oath of office" when he takes over. An oath is a promise:

"I do solemnly swear that I will faithfully execute the office of president of the United States, and will to the best of my ability, preserve, protect and defend the Constitution of the United States."

The swearing-in is called an inauguration (in-ah-goor-RAY-shun). Then he delivers his Inauguration speech.



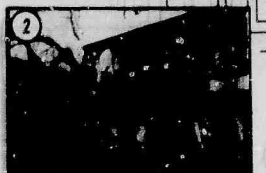
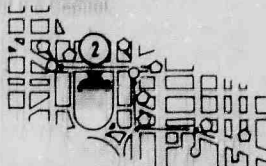
Trace around the president's picture on a piece of cardboard. Glue the photo to the cardboard.

At the last inauguration, in 1989, President George Bush raises his right hand while Mrs. Bush holds the Bible. Chief Justice Rehnquist does the swearing-in. Notice the photographers and the Washington Monument in the background.



The Parade

1 The president will be sworn in outdoors on the west front of the Capitol.



2 Later, he will walk or ride down Pennsylvania Avenue to a viewing stand in front of the White House.



In 1977, President Jimmy Carter and his wife, Rosalynn, surprised everyone when they walked some of the way down the parade route.



Not many dogs go to the parade, but this one did, all dressed up in a sweater! It is usually cold in Washington at this time of year.

The Mini Page Presidents Poster — with newly elected President Bill Clinton — is available now!

Begin the new year up-to-date with the new Presidents of the United States Poster. Illustrated with reproductions of engraved portraits, this 28" x 22" poster shows each of the presidents in chronological order, with the dates that each held office.

An attractive, educational reference, the Presidents Poster is ideal for home and classroom use.

Mail order to:
The Mini Page Presidents Poster
P.O. Box 419150
Kansas City, Mo. 64141

Please send _____ copies of the Presidents of the United States Poster at \$3.00 plus 50¢ each postage and handling. (Make check or money order payable to Andrews and McNeil.) Total amount enclosed _____

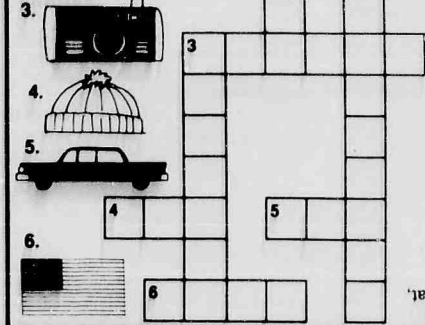
Name _____
Address _____
City _____ State _____ Zip _____



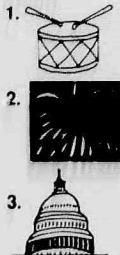
PETER PENGUIN'S PUZZLE LE-DO

Fit the names of these things you might see at the Inauguration into the puzzle.

ACROSS:



DOWN:



1. drum, 2. flag, 3. Capitol.
Across: 3. camera, 4. hat.

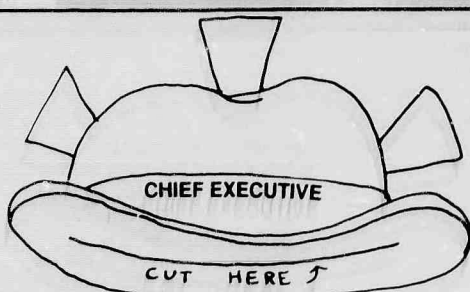
ANSWERS:

BASSET BROWN THE NEWS HOUND'S INAUGURATION TRY 'N FIND

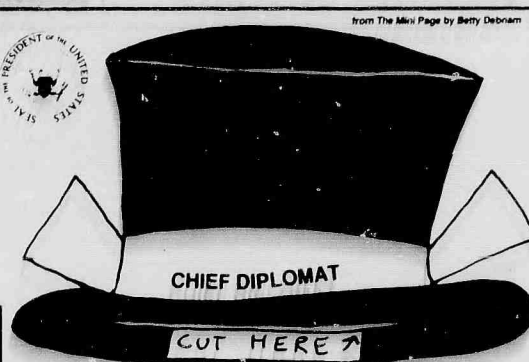
Words about the Inauguration are hidden in the block below. Some words are hidden backward or diagonally. See if you can find: PEOPLE, INAUGURATION, PRESIDENT, SPEECH, OATH, CROWD, WASHINGTON, FLAG, CAPITOL, MUSIC, PARTY, BAND, MARCH, WAVE.



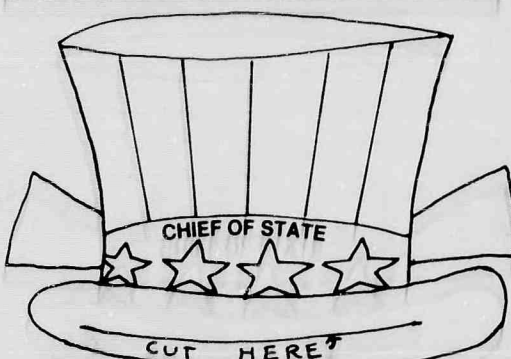
A J D Y P N O T G N I H S A W
C K M P M E B V E N S W B S V
C R W A A U O L F O P A A T V
D M O G R R S P X P E V N U X
E N Y W C C T I L J E E D Q X
F P Z K D Z H Y C E C F L A G
P R E S I D E N T G H Q A L R
H C A P I T O L B H T A O R M
I U C N O I T A R U G U A N I



As chief executive, the president is the boss of millions of U.S. government employees. He also must propose laws to Congress that he thinks should be passed.



As chief diplomat, the president helps decide how our country will act toward other countries. He selects our ambassadors, whom the Senate must approve.



As chief of state, the president represents our country here and in other lands. He attends many ceremonies as a symbol of the U.S. A king might carry out these duties in other countries.



As a golfer and jogger, the president tries to keep in shape. (He also likes board games and card games.)



As party leader, the president has much influence over the way his political party thinks about national problems. He also makes speeches and tries to raise money for his party.



As a musician, President Clinton likes to play the saxophone. He went to music camp for six summers when he was growing up. He got many offers for music scholarships. (No hat is shown, but we have a saxophone for you!)



Benefits

As leader of our country, the president has a big job. He is also given many advantages. These include:

- the rent-free White House and nearby retreat, Camp David in Maryland.
- jet planes, helicopters and a fleet of cars.
- medical care.
- many chances to travel.

Salary

• The president makes \$200,000 a year. He also gets a \$50,000 expense account.



Read all about the president's Cabinet in next week's Mini Page.

Mini Spy . . .

Mini Spy has been elected president of her school. See if you can find:



• lima bean • number 8

- pineapple
- banana
- pig's face
- word MINI
- two candles
- top hat
- leaf
- letter C
- hot dog
- heart
- letter L



President Bill Clinton, first lady Hillary Clinton, Vice President Al Gore and his wife, Tipper. This photo was taken during the campaign. To show the role that they were playing, they would be wearing Democratic Party hats.



Use the tab to attach the saxophone.



NUTLEY LITTLE THEATRE CAST — Cast of "The Importance of Being Earnest" includes (l-r) seated, Richard Sibello of Nutley and Gwen V. Fogarty of Bloomfield; standing (l-r) Sue Brown and Ellen Young of Bloomfield. The Oscar Wilde play continues this weekend and again Jan 21-23. Tickets can be reserved by calling 667-0374.

Local resident featured in Nutley theater show

Oscar Wilde's "The Importance of Being Earnest" will mark its 100th anniversary in 1995 but despite the age of what critics often call Wilde's masterpiece, this "trivial comedy for serious people" sold out during its opening weekend at the nearby Nutley Little Theatre.

"I just love doing accents!" Gwen V. Fogarty of Bloomfield remarks. Fogarty stars as Lady Bracknell in the Nutley production which continues this weekend and again Jan. 21-23.

The Bloomfield actress is a veteran of community theater in the metropolitan area including such roles as Nurse Ratched in "One Flew Over the Cuckoo's Nest," Eleanor of Aquitaine in "Lion in Winter" and Mother Superior in "Agnes of God."

Others in the cast include Ellen Young (Rev. Chasuble) and Sue Brown (Cecily) of Bloomfield, Richard Sibello (Algernon) of Nutley, Karen Fain (Miss Prism) of Passaic, Marie McMurrer (Gwendolyn) of Montclair and Vladimir Schiam (Butler) of Maplewood.

Sue Brown, who studied acting at New York's American Academy of Dramatic Arts, was featured in last May's Montclair Dramatic Club production "The Odd Couple" and played Karen in "Speed the Plow" presented last June in Nutley. Like many struggling actors, she spends much of her time as a waitress — in this case at the Feedbag in Bloomfield.

Ellen Young, who is Rev. Chasuble in "The Importance of Being Earnest," says "it's the spoof of the pretentious upper class Victorian England that makes this play sparkle. And director Ray Kempner (Roselle Park) and the cast are all wonderful to work with."

Richard Sibello, who has appeared in several Nutley Little Theatre productions, agreed. "This is a great cast without a weak link. And Wilde's dialogue is eloquent." Sibello's earlier credits include "Biloxi Blues," "The Taming of the Shrew," "The Male Animal" and "Our Hearts Were Young and Gay," among others.

Seats for all performances of "The Importance of Being Earnest" are \$8 and can be reserved by calling 667-0374. Located at 47 Erie Place, the Nutley Little Theatre is accessible via Brookfield Avenue which runs between Franklin and Passaic avenues.

TAX NOTICE

Take notice that the Assessment List for the Township of Belleville, for the tax year 1993, may be inspected by any taxpayer to ascertain the assessments made against their property, and to confer informally with the Assessor as to the correctness of their assessment.

Said Assessment List may be inspected on Wednesday, January 20, 1993 between the hours of 8:30 a.m. and 4:00 p.m., at the Assessor's Office, Township Hall, 152 Washington Avenue, Belleville, New Jersey.

Belleville Times
Jan. 14, 1993
Fee: \$7.05

No. B93-17

TOWNSHIP OF BELLEVILLE ZONING BOARD OF ADJUSTMENT NOTICE

"In compliance with Chapter 291, Laws of N.J. 1975 (N.J.S.A. 40:55D-1 et. seq.) and the Zoning Ordinance of the Township of Belleville," notice is hereby served that Cerebral Palsy of Essex & West Hudson does hereby propose to construct a one story, four bedroom group home for six

physically handicapped adults. Location: 31-35 Cuomo Street, Belleville, N.J. Block 712, Lot 59 & 60

In view of the fact that the erection, alteration, conversion or use of said premises is not in conformity with the Zoning Ordinance, it hereby makes an appeal to the Zoning Board of Adjustment for a bulk & parking variance and such other relief, as required.

Any person or persons interested by said appeal will be given an opportunity to be heard at the meeting to be held on Feb. 2, 1993 at 7:30 p.m. in the Belleville Township Municipal Building at 152 Washington Ave., Belleville, New Jersey. Copies of all documents related to this application are available for public inspection at the office of Planning and Development, 383 Washington Avenue, Belleville, N.J. during regular business hours (8:30 a.m. - 4:00 p.m.).

Belleville Times
Jan. 14, 1993
Fee: \$15.51

No. B93-27

NOTICE TO ABSENT DEFENDANTS (L.S.) STATE OF NEW JERSEY TO CHARLES BROWNING, your heirs, devisees and personal representatives and your, their and any of their successors in right, title or interest, JANICE BROWNING, HIS WIFE

YOU ARE HEREBY SUMMONED AND REQUIRED to appear upon FEDERMAN AND PHELAN, P.C., plaintiff's attorney whose address is Suite 505, Sentry Office Plaza, 216 Haddon Avenue, Westmont, New Jersey 08108, an answer to the Complaint and Amendment to Complaint, filed in a civil action, in which Fleet Real Estate Funding Corporation, is plaintiff and Charles H. Browning, et al. are defendants pending in the Superior Court of New Jersey, Chancery Division, Essex County and bearing Docket No. F-10309-92 within thirty-five (35) days after January 14, 1993 exclusive of such date. If you fail to do so, judgment by default may be rendered against you for the relief demanded in the Complaint and Amendment to Complaint. You shall file your answer and proof of service in duplicate with the Clerk of the Superior Court of New Jersey, Hughes Justice Complex, CN-971, 24 Market Street, Trenton, New Jersey 08625, in accordance with the rules of civil practice and procedure.

This action has been instituted for the purpose of (1) foreclosing a mortgage dated February 27, 1986 made by Charles H. Browning mortgagor given to Intecounty Mortgage Corp., and recorded on March 11, 1986 in Book 5241 of Mortgages for Essex County at Page 863. Intecounty Mortgage Corp. is now known as Fleet Real Estate Funding Corporation, the plaintiff herein, and; (2) to recover possession of, and concerns premises commonly known as 31 Salem Street, Newark, NJ 07106.

If you are unable to obtain an attorney you may communicate with the New Jersey State Bar Association by calling 800-852-0127. You may also contact the Lawyer Referral Service of the County of venue by calling 201-533-1779. If you cannot afford an attorney, you may communicate with the Legal Services office of the county of venue by calling 201-672-6050.

YOU, Charles H. Browning, the heirs, devisees and personal representatives of Charles H. Browning, and your, their or any of their successors in right, title and interest are named as a party defendant to this foreclosure action because you signed the mortgage and bond being foreclosed herein and may be liable for any deficiency and for any lien, claim, title or interest you may have in, to or on the mortgaged premises and because you are an heir at law of Charles H. Browning, deceased who died in September, 1991, late of the City of Newark, County of Essex and State of New Jersey.

YOU, Janice Browning, are named as a party defendant herein for any lien, claim, title or interest you may have in, to, or on the mortgaged premises because you are the wife of Charles H. Browning and because you are the heir at law of Charles H. Browning.

DONALD F. PHELAN,
Acting Clerk
Superior Court of New Jersey

Belleville Times
Jan. 14, 1993
Fee: \$34.78

No. B93-15

SHERIFF'S SALE
SUPERIOR (CHAN) D-275
SUPERIOR COURT OF NEW JERSEY, CHANCERY DIVISION, ESSEX COUNTY, DOCKET NO. F-1275-91
EUROPEAN AMERICAN BANK, a New York Corp., PLAINTIFF vs ELAINE B. MACKEY, et al, DEFENDANTS. Execution For Sale of Mortgaged Premises

By virtue of the above stated writ of Execution, to me directed, I shall expose for sale by Public Auction, in SHERIFF'S OFFICE, Essex County Courts Building in Newark, on Tuesday, the 19th day of January 1993, at one-thirty P.M., (Prevailing Time) The property to be sold is located in the City of Newark in the County of Essex, New Jersey.

Commonly known as: 312 South 20th Street, Newark, New Jersey.
Tax Lot No. 49 in Block 1794
Dimensions of Lot: (Approximately) 25 feet by 100 feet long.
Nearest Cross Street: Situate on the easterly side of South 20th Street, 275 feet from the southerly side of 12th Avenue.

A full legal description can be found in the Office of the Register of Essex County. ADEPOSIT OF 10% OF THE BID PRICE IN CASH OR CERTIFIED FUNDS IS REQUIRED AT THE TIME OF SALE.

The approximate amount of the Judgment to be satisfied by said sale is the sum of FORTY TWO THOUSAND TWO HUNDRED TWENTY SEVEN DOLLARS AND FOURTEEN CENTS (\$42,227.14) together with the costs of this sale.

The Sheriff reserves the right to adjourn the sale from time to time as provided by Law.

Newark, N.J. December 14, 1992

ARMANDO B. FONTOURA, Sheriff

Zucker, Goldberg, Becker, & Ackerman, Attorneys

Please refer to file XCH-26170 1-201-763-778

Belleville Times

Dec. 24, 31, 1992

Jan. 7, 14, 1993

Fee: \$88.36

No. B92-553

ESSEX COUNTY SHERIFF'S SALE
SUPERIOR (CHAN) D-310
SUPERIOR COURT OF NEW JERSEY, CHANCERY DIVISION, ESSEX COUNTY, DOCKET NO. F-5355-90 VINCENT STRUMOLO AND HELEN STRUMOLO, PLAINTIFF vs ANGELA VALERIUS, ET ALS, DEFENDANTS. Execution For Sale of Mortgaged Premises

By virtue of the above stated writ of Execution, to me directed, I shall expose for sale by Public Auction, in SHERIFF'S OFFICE, Essex County Courts Building in Newark, on Tuesday, the 2nd day of February 1993, at one-thirty P.M., (Prevailing Time)

The property to be sold is located in the Township of Belleville in the County of Essex, and State of New Jersey.

Commonly known as: 70-80 Franklin Street, Belleville, New Jersey.
Tax Lot No. 1 in Block No. 753
Dimensions of Lot: (Approximately) 202 feet wide by 208 feet long.

Nearest Cross Street: Situate at the intersection of Franklin Street and North Ninth Street 206.62'

A full legal description can be found in the Office of the Register of Essex County. ADEPOSIT OF 10% OF THE BID PRICE IN CASH OR CERTIFIED FUNDS IS REQUIRED AT THE TIME OF SALE.

The approximate amount of the Judgment to be satisfied by said sale is the sum of FOUR HUNDRED TWELVE THOUSAND SIX HUNDRED EIGHTY FIVE DOLLARS AND FIFTY FIVE CENTS (\$412,685.55) together with the costs of this sale.

The Sheriff reserves the right to adjourn the sale from time to time as provided by Law.

Newark, N.J. December 28, 1992

ARMANDO B. FONTOURA, Sheriff

Michael O. Bertone, Attorney

Belleville Times

Jan. 7, 14, 21, 28, 1993

Fee: \$86.48

No. B92-580

SHERIFF'S SALE
SUPERIOR (CHAN) D-345
SUPERIOR COURT OF NEW JERSEY, CHANCERY DIVISION, ESSEX COUNTY, DOCKET NO. F-1482-92 MIDLANTIC HOME MORTGAGE CORPORATION, PLAINTIFF vs JUAN MORENO, unmarried, et als, DEFENDANT. Execution For Sale of Mortgaged Premises

By virtue of the above stated writ of Execution, to me directed, I shall expose for sale by Public Auction, in SHERIFF'S OFFICE, Essex County Courts Building in Newark, on Tuesday, the 9th day of February 1993, at one-thirty P.M., (Prevailing Time)

The property to be sold is located in the City of Newark in the County of Essex and State of New Jersey.
Tax Lot No. 14 in Block 576
Dimensions of Lot: (Approximately) 25' x 105'

Nearest Cross Street: Nursery Street
Premises Commonly known as: 40 Waken Avenue, Newark, N.J. 07104.

A full legal description can be found in the Office of the Register of Essex County. ADEPOSIT OF 10% OF THE BID PRICE IN CASH OR CERTIFIED FUNDS IS REQUIRED AT THE TIME OF SALE.

The approximate amount of the Judgment to be satisfied by said sale is the sum of ONE HUNDRED NINETY-SIX THOUSAND SIX HUNDRED FOURTEEN DOLLARS AND SIXTEEN CENTS (\$196,614.16) together with the costs of this sale.

The Sheriff reserves the right to adjourn the sale from time to time as provided by Law.

Newark, N.J. January 4, 1993

ARMANDO B. FONTOURA, Sheriff

Hubschman & Roman, Attorneys

Belleville Times

Jan. 14, 21, 28, Feb. 4, 1993

Fee: \$77.08

No. B93-4

NOTICE TO ABSENT DEFENDANTS (L.S.) STATE OF NEW JERSEY TO JO E. UDDYBACK, MR. UDDYBACK, HUSBAND OF JO E. UDDYBACK, BEATRICE A. GHEE AND MR. GHEE, HUSBAND OF BEATRICE A. GHEE
YOU ARE HEREBY SUMMONED AND REQUIRED to appear upon FEDERMAN AND PHELAN, P.C., plaintiff's attorney whose address is Suite 505, Sentry Office Plaza, 216 Haddon Avenue, Westmont, New Jersey 08108, an answer to the Complaint, filed in a civil action, in which Nationalbank Mortgage Corporation is plaintiff and Jo E. Uddyback, et al., et al. are defendants pending in the Superior Court of New Jersey, Chancery Division, Essex County and bearing Docket No. F-9556-92 within thirty-five (35) days after January 14, 1993 exclusive of such date. If you fail to do so, judgment by default may be rendered against you for the relief demanded in the Complaint. You shall file your answer and proof of service in duplicate with the Clerk of the Superior Court of New Jersey, Hughes Justice Complex, CN-971, 24 Market Street, Trenton, New Jersey 08625, in accordance with the rules of civil practice and procedure.

This action has been instituted for the purpose of (1) foreclosing a mortgage dated June 30, 1987 made by Jo E. Uddyback and Beatrice A. Ghee, as mortgagors given to First Financial Mortgage Corporation and recorded on July 15, 1987 in Book 5455 of Mortgages for Essex County, at Page 358 which mortgage was assigned on June 30, 1987 to Criterion Financial Corporation, and recorded on July 16, 1987 in Book 669 of Assignments, said county, at Page 587, which mortgage was assigned on November 1, 1990 by Fundamental Mortgage Corporation, then Criterion Financial Corporation to NCNB Mortgage Corporation. NCNB Mortgage Corporation is now known as Nationalbank Mortgage Corporation the plaintiff herein. Said assignment was recorded on October 30, 1991 in Book 669 of Assignments of said county, at Page 587; and (2) to recover possession of, and concerns premises commonly known as 198 Smith Street, Newark, NJ 07106.

If you are unable to obtain an attorney you may communicate with the New Jersey State Bar Association by calling 800-852-0127. You may also contact the Lawyer Referral Service of the County of venue by calling 201-533-1779. If you cannot afford an attorney, you may communicate with the Legal Services office of the county of venue by calling

201-672-6050.
YOU, Jo E. Uddyback, are named as a party defendant to this foreclosure action because you are the record owner of the mortgaged premises, because you executed the bond and mortgage being foreclosed herein and may be liable for any deficiency thereon and for any right, title, claim or interest you may have in, to or on the mortgaged premises.

YOU, Mr. Uddyback, husband of Jo E. Uddyback, are named as a party defendant in this foreclosure action because you are the husband of Jo E. Uddyback, it not being known whether or not Jo E. Uddyback is married.

YOU, Beatrice A. Ghee, are named as a party defendant to this foreclosure action because you are the record owner of the mortgaged premises, because you executed the bond and mortgage being foreclosed herein and may be liable for any deficiency thereon and for any right, title, claim or interest you may have in, to or on the mortgaged premises.

YOU, Mr. Ghee, husband of Beatrice A. Ghee, are named as a party defendant in this foreclosure action because you are the husband of Beatrice A. Ghee, it not being known whether or not Beatrice A. Ghee is married.

DONALD F. PHELAN,
Acting Clerk
Superior Court of New Jersey

Belleville Times
Jan. 14, 1993
Fee: \$44.18

No. B93-18

ESSEX COUNTY SHERIFF'S SALE

SUPERIOR (CHAN) D-327
SUPERIOR COURT OF NEW JERSEY, CHANCERY DIVISION, ESSEX COUNTY, DOCKET NO. F-12349-91 FEDERAL NATIONAL MORTGAGE ASSOCIATION, PLAINTIFF vs JOHN ELVIN & MRS. JOHN ELVIN, h/w, et als, DEFENDANTS. Execution For Sale of Mortgaged Premises

By virtue of the above stated writ of Execution, to me directed, I shall expose for sale by Public Auction, in SHERIFF'S OFFICE, Essex County Courts Building in Newark, on Tuesday, the 2nd day of February 1993, at one-thirty P.M., (Prevailing Time)

Being all that certain real property, subject to the provision of the State of New Jersey Condominium Act, N.J.S.A. 46:2B-1 et seq., its amendments and supplements and situate, lying and being in the City of Newark, County of Essex, State of New Jersey, more particularly described as Unit No. 2A in Building No. 592-594 in BRANCH BROOK CONDOMINIUM, a New Jersey Condominium, together with an aggregate 3.4495 percent undivided interest in the Common Elements of said Condominium appurtenant to the aforesaid Unit, in accordance with and subject to the terms, limitations, conditions, covenants, restrictions, easements, agreements and other provisions set forth in the Master Deed for BRANCH BROOK CONDOMINIUM, a condominium, dated January 4, 1982 and recorded September 9, 1982 in the Office of the Essex County Register in Deed Book 4761 page 424, et seq., as the same may now or hereafter be lawfully amended and subject to the provisions of the By-Laws on the Branch Brook Condominium Association, Inc., and any amendments thereto.

ALSO BEING KNOWN AS LOT 9C UNIT 2A BLOCK 594 ON THE TAX MAP OF THE CITY OF NEWARK, COUNTY OF ESSEX, STATE OF NEW JERSEY.

Commonly Known as 592 North 6th Street, Newark, N.J.
ADEPOSIT OF 10% OF THE BID PRICE IN CASH OR CERTIFIED FUNDS IS REQUIRED AT THE TIME OF SALE.

The approximate amount of the Judgment to be satisfied by said sale is the sum of THIRTY-NINE THOUSAND ONE HUNDRED NINETY-THREE DOLLARS AND ELEVEN CENTS (\$39,193.11) together with the costs of this sale.

The Sheriff reserves the right to adjourn the sale from time to time as provided by Law.

Newark, N.J. December 28, 1992

ARMANDO B. FONTOURA, Sheriff

Shapiro & Krieman, Attorneys

Belleville Times

Jan. 7, 14, 21, 28, 1993

Fee: \$116.56

No. B92-581

United Artists
Channel 20

OBC-TV
OUR BEST CHOICE

Suburban Cable
Channel 36

OBC-TV Schedule

THURSDAY 12/31/92

5:30 p.m. - Wrestling Tracks
U.S.A.-Wrestling News
6:00 p.m.- The Theresa Nance Show-Interviews & Topics of Concern to Area Viewers
6:30 p.m. - The 11th 12 Hour-A Condensed Version of our Sat. Night Show
7:00 p.m. - Special
7:30 p.m. - Fiancee-The Ultimate Pre-Nuptial Show: Mary Kay Cosmetics
8:00 p.m. - Film Flicks & Video
8:30 p.m. - Middle Eastern TV-Programming for the Middle Eastern Viewers
10:00 p.m. - The Uncle Floyd Show-Zany Comedy with Uncle Floyd
10:30 p.m. - Special
11:00 p.m. - Special: OBC Rock-in' comedy New Year's Celebration, hosted by Mugsy from the 11th Hour & Al Cocchi of Video Spotlight

FRIDAY 1/1/93

5:00 p.m. - Astrology Today (Repeat of Tuesday's show)
6:00 p.m. - Sudzin Country Videos
7:00 p.m. - Film Flicks & Video
Pixs
7:30 p.m. - Special
8:00 p.m. - Front Page Edition: Watessing Park
8:30 p.m. - Pro Wrestling Today: Picks & Previews of Pro Wrestling
9:00 p.m. - Scholastic Sports Today-Interviews with Area Coaches and High School Athletes
9:30 p.m. - Wrestling Tracks U.S.A.
10:00 p.m.- The Uncle Floyd Show
10:30 p.m. - Power Play
SATURDAY 1/2/93
10:30 a.m. - Front Page Edition: Watessing Park
11:00 a.m. - The Theresa Nance Show
11:30 a.m. - The Final Score-

Pro Sports Handicapping

12:00 noon - Pro Wrestling Today
12:30 p.m. - America's Backyard-Gardening & Home Fix-It Tips
10:00 p.m. - The Uncle Floyd Show
11:00 p.m. - The 11th Hour Live-Live Comedy
SUNDAY 1/3/93
10:00 a.m. - Fiancees-Mary Kay Cosmetics
10:30 a.m. - Pro Wrestling Today
11:00 a.m. - The Final Score
11:30 a.m. - Health Issues: St. Joseph's Hospital
12 noon - Meet Your Mayor - Nutley
12:30 p.m. - America's Backyard
MONDAY 1/4/93
8:00 p.m. - Front Page Edition: Watessing Park
8:30 p.m. - Health Issues: St. Joseph's Hospital
9:00 p.m. - Meet Your Mayor - Nutley
9:30 p.m. - Film Flicks & Video

Pixs

10:00 p.m. - The Uncle Floyd Show
10:30 p.m. - Power Play-Music Videos That MTV Doesn't Play
TUESDAY 1/5/93
6:00 p.m. - Sing Along New Jersey-Sec Club Goers Sing to their Favorite Songs
6:30 p.m. - The 11th 12 Hour
7:00 p.m. - Special
9:00 p.m. - Astrology Today
Hosted by Steven Joseph Sinopoli
WEDNESDAY 1/6/93
6:30 p.m. - Christmas: A Time To Forgive
7:00 p.m. - Fiancees-Pre-Nuptial Agreements: Mary Kay Cosmetics
7:30 p.m. - Scholastic Sports
Today
8:00 p.m. - Power Play Country
10:00 p.m. - The Uncle Floyd Show
10:30 p.m. - Sing Along New Jersey
11:00 p.m. - Meadowlands Show-case

THERE'S NO PLACE LIKE HOME

180 Centric St.
Nutley, N.J. 07110
607 3440

GEORGE E. MACMUNN CO.
REALTORS

166 Woodport Road
Sparta, N.J. 07871
729 8121



NUTLEY - JUST LISTED - SPRING GARDEN

School area, charm abounds in this immaculate, tastefully decorated 3 BR, 1 1/2 bath home. Beautiful Frpl. wall, natural trim with built in bookcases, mod eat-in kitchen, formal DR, large Fam. Rm., fenced rear yard, 1 car gar. CALL FOR ADD'L DETAILS.
ASKING \$204,900.



BLOOMFIELD - JUST LISTED - BROOKDALE,
dead-end St. and the Park is your neighbor, lots of privacy, 4 BR's 2 full baths, den on 1st fl., Fam. Rm. on lower level, 2 car gar. A MUST SEE
ASKING \$215,000.

**DO YOU KNOW
WHAT YOUR
HOUSE IS
WORTH
TODAY?**

We offer a current market
value analysis...
Just pick up the phone & call.



LAKE MOHAWK - SPARTA - ASKING \$124,900

Best Buy in Town! LR w/stone Frpl, formal DR, eat-in kit, rear deck, covered side porch, 1/2 blk to beach, nice views, 2 big BR's (both 19x12), new furnace, roof & elec, taxes only \$2,204. Hurry on this!

Too New For Photo



SPARTA - ASKING \$132,500. JUST LISTED

Fam. neighborhood on quiet street, immac 3 BR Ranch. Mod kit & bath, frpl, fam. rm. 185x100 lot. Lots of nice upgrades & taxes only \$2,898. Terrific condition!

Temperature-Control Technology Advances Luxury In The Shower

CeraTherm revolutionizes the daily shower with sophisticated thermostatic-control technology for superior comfort and safety.

A luxury for homeowners who enjoy frequent showers, CeraTherm has a dial with a range of comfortable temperature choices. Users simply pre-select their favorite shower temperature on the dial, and leave it! That means no fumbling in the pre-dawn hours for that perfect water temperature, wasting both time and water.

Maintaining a constant temperature, CeraTherm eliminates the problem of sudden scalding or freezing water during showering. Such temperature changes result from pressure changes, such as a flushed toilet elsewhere in the house, or temperature changes, such as unexpected fluctuations in water heater temperature. In fact, CeraTherm will immediately shut off water flow in the event of cold water supply failure.

CeraTherm's temperature control knob is automatically limited to a maximum of 100 degrees Fahrenheit. Adults can override this safety feature by pressing a special button.

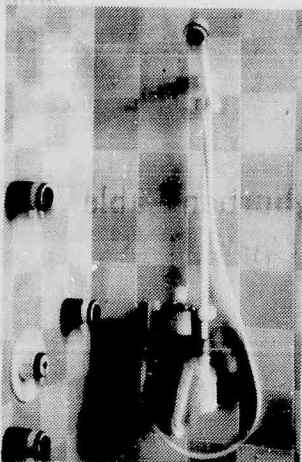
The technology behind CeraTherm is a simple valve cartridge, using a technology similar to thermostatic controls on automobiles. The cartridge houses a material that rapidly expands and contracts with temperature changes. It is neither computerized, nor electronic, so plumbing contractors will find CeraTherm is installed in a manner similar to most shower valves.

CeraTherm is available in three styles. The first model has one handle with two dials to control temperature and turn water on and off. The second model has two handles: one to control temperature and one to control water flow. The third model is simply the thermostatic valve, which is used when a separate handle style is desired.

A range of showerheads, body sprays and hand showers can be used with CeraTherm. Finish selections include Polished Chrome, Polished Brass and White.



Using a technology similar to thermostatic controls on automobiles, CeraTherm eliminates the problem of sudden scalding or freezing water during showering. This model has separate handles to control temperature and water flow; another option has one handle with two dials, while a third model is simply the thermostatic valve, and can be used when a separate handle style is desired.



CeraTherm revolutionizes the daily shower with sophisticated thermostatic-control technology for superior comfort and safety. A luxury for homeowners who enjoy frequent showers, users simply pre-select their favorite shower temperature on the dial. A range of showerheads, body sprays and hand showers can be used with CeraTherm.

Today's Automatic Garage Door Openers Offer Many New Advantages

If your automatic garage door was built in 1982 or earlier, you're missing out on many new electronic features that today's systems provide. The Door Operator and Remote Controls Manufacturers Association (DORCMA) recommends replacing older garage door openers both for convenience and for improved safety. Among the new features offered by current models are:

- Multi-function wall stations that let you use accessories without activating the door.
- Convenience work lights to illuminate the garage for as long as you wish without the light going off in a few minutes.
- Vacation switches that allow you to turn off the system for an extended period so no one can enter while you're away.
- External keypads that allow you to open or close your garage door without having to carry a transmitter.

Many of today's automatic garage



**BRUNO MARINO JR.
NAMED "REALTOR
ASSOCIATE OF THE
YEAR" FOR 1992**

The Bloomfield, Nutley Glen Ridge and Belleville Board of Realtors has selected Bruno Marino Jr. as "Realtor Associate of the Year" for 1992. Bruno is active in Realtors for Political Action, he is President of the Bloomfield Planning Board and is a member of the Bloomfield Kiwanis Club. He is a full time Broker/Associate with Century 21 Homes Thru Us at 549 Washington Ave. Belleville, N.J. 751-8800

door operators come equipped with photo electric devices or electric edge sensors connected to the bottom of



Standing in front of the doorway, reach forward, the door should reverse.

the door to provide greater safety. Federal law requires such safety devices on all operators manufactured after January 1, 1993. These operators will not close the door unless the safety devices are in place and functioning properly.

Two easy ways to see if your garage door currently is operating properly are, first, to place a 1 1/2 inch piece of wood on the floor below the center of the door. The door should reverse as soon as it touches the wood. Second, stand in front of the center of the doorway and reach forward to stop the door as it rolls down. Again, it should reverse before it exerts excessive force against your hands. If the force is too great, the mechanism needs adjusting.

Make sure the push button wall control is mounted out of the reach of small children - at least five feet above the floor.

You should have a qualified person make any adjustments because the door springs and related hardware are under great tension and could cause serious injury if improperly handled. Look under "Doors" in the business phone directory.

If you have an older garage door opener, built before 1982, DORCMA urges you to replace it in order to take advantage of the increased safety and added features of more recent models.

For a free brochure on garage door opener safety and testing, call 1 800 727-2338, or write Frank S. Fitzgerald, CAE, Executive Secretary, Door Operator and Remote Controls Manufacturers Association, 3950 N. Lake Shore Drive., Suite 502-A, Chicago, IL 60613.

WANTED

**YOUR INSPECTION / YOUR OFFER
THE REWARD WILL BE YOURS**

In this 7 room Radcliffe Colonial with 2 1/2 baths, fireplace in living room, country kitchen, 1st floor family room & rear porch.

YANTACAW SPECIAL

6 1/2 rooms in move-in-condition awaits your inspection & offer on asking price of \$174,500.

It Doesn't Get Much Better Than This.

GEORGE T. BOWLES
YOUR NUTLEY REALTOR SINCE 1977
681 FRANKLIN AVE. NUTLEY 07110

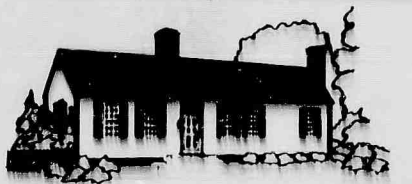
ADVERTISE!

Century 21
A CV REAL ESTATE
365-2122

**OUR A CV STAFF EXCELS...
WITH SERVICE THAT SELLS!**

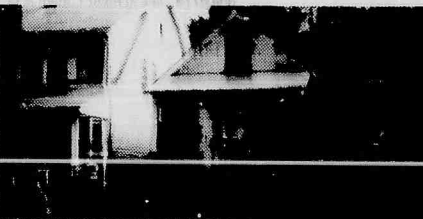


* and TM trademarks of Century 21 Real Estate Corporation. Equal Housing Opportunity INDEPENDENTLY OWNED AND OPERATED



Belleville Starter Ranch

Raised ranch makes a fine starter home-better than a condo. Offers 2 Brms., semi-fin. Rec rm on ground level, garage w/open-er & more. Priced to sell - \$119,900.



Bloomfield Unbelievable Value

Delightful cape on quiet dead-end St. makes the ideal starter at a very affordable price. Features 2 lg. Brms., encl. porch, newer roof & flooring & incl. all appliances & window treatments. Only \$103,900.



Little Falls Tulip Gardens Condo

Beautiful, spacious 2nd fl unit offers 2 Brms., 2 Bas & many luxury features including vaulted ceilings, Epic. CA & sliders to deck. Gorg. cherry Kitchen w/Top of the Line appliances too. Lowest price in complex - \$178,700.



Nutley Mastersized Colonial

Simply beautiful and overly spacious 3 Brm home - oozes with "Pride of Ownership". Features 1 full & 2 half Bas., lg & mod. country Kitchen, lovely HW fls W/W carpet + gar. Come see this delightful home today. Only \$179,800.



Nutley Must Be Sold

Extremely motivated seller wants offers on this 2 level condo offering 1 spec. Brm., 1 1/2 Bas., Eat-in Kitchen w/Dining area + CA and all appliances too. See & Make offer. Only \$109,000.



Best Priced Condo!

Bloomfield - Motivated seller wants offers on this 1 Brm., 1st fl. unit in beautiful condo. \$79,900

Belleville - Decorator 2 Brm. condo, ideal for commuter. \$89,900

Belleville - Open House - 21 Barnett Ln., C15, Sat. 1/16 - 12-3 PM Sunny, spec. & super clean 2 Brm unit. Offer wanted - \$121,900



THE CLASSIFIEDS

HOURS:
Mon.-Fri. 9am-5pm

Call:
667-3000

All Classified Ads appear automatically in all three of our papers: The Nutley Sun, Belleville Times, Bloomfield Life.

Transient Ads — Paid in Advance

First 4 lines \$16.91
Each Additional Line \$1.52
Borders Are Available
For a Fee of \$10.00
Contract Rates Available



Are Accepted

Call Today
667-3000

Check your Ad the first day of publication

CREDITS:

Credits & adjustments are to be made only for errors which significantly alter the effectiveness of the ad, such as a wrong telephone number or price. Credits will not be issued for typographical errors or misspelled words. The newspapers can assume responsibility only for MAJOR errors in the first day's publication.

Classified Deadline Tuesday 12 Noon

Name _____	
Address _____	
Phone _____	
Category _____	
<input type="checkbox"/> Border \$10.00 Additional	
Run Date _____	Number of Insertions _____
<input type="checkbox"/> Check _____ Visa/M/C No. _____	

GENERAL OPPORS.

CLERK - MATURE

Part time. 4 hours per day. Nice handwriting. Will train on computer. Call:

Goodman Sales Co.
997-2900

CRUISE SHIP JOBS.
HIRING, UP TO \$900/
WEEKLY.
BARTENDERS, CASINO
WORKERS, TOUR
GUIDES, ETC. FREE
TRAVEL, HAWAII,
CARIBBEAN,
BAHAMAS. NO EX-
PERIENCE NECESSARY
1 (818)-960-9144
EXT C-1025 (Fee)

FULL TIME/PART TIME

\$11.00 TO START

Due to expansion local
Verona office of interna-
tional company has 10 to
15 positions needed to be
filled immediately.
Flexible hours; great
second income;
advancement. Positive,
hard working only need
apply. 201-239-3382

GENERAL OPPORS.

GENERAL MAINTENANCE MECHANIC Part Time

Clara Maass Medical
Center, a 475-bed facility
located in Belleville, NJ,
is currently seeking a
part time General
Maintenance Mechanic.
Refrigeration experience
required. Please call
Deborah Patti, Human
Resources Recruiter at
(201) 450-2117.



One Franklin Avenue
Belleville, NJ 07109
An EOE/AA

GENERAL OPPORS.

Make Money in Mexico
New Trade Agreement
Opens Doors. Take
Advantage. Brand New
Book Explains How. Send
\$29.00. Mexico, 5 Mystic
Way, Burlington, NJ
08016

MANICURIST wanted-
preferably following.
Salary plus commission.
Call 305-1511

P/T Receptionist/Typist
Needed for Construction
Company
Call 672-0139

Part Time Teachers/coor-
dinators are needed to or-
ganize short term
HOMESTAY
PROGRAMS
for groups in International
Exchange Students. Su-
pervise spring or summer
groups in your own
community. Flexible work
schedule. Motivation
needed: no prior expe-
rience necessary;
wonderful experience;
GOOD PAY! Send letter
of interest or resume to
INTERNATIONAL
EDUCATION FORUM,
790 Pine Shore Rd., Toms
River, NJ 08753

Pet sitter needed
in Nutley for 2 dogs.
Reliable w/flexible hrs
Call after 7 667-7614

READ BOOKS FOR
PAY! Earn Good Money
Doing Something You
Enjoy! \$100.00 a Title!
Recorded Message Gives
Full Details. CALL
1-800-330-5518

RECEPTIONIST -P/T
start immd. resp mature,
reliable, indiv. 2 pm - 10
pm 751-6999

TEACHER
COMMUNITY LEADER
needed to organize short
term HOMESTAY
PROGRAMS for inter-
national exchange
students this Summer.
Excellent pay, \$3,000
plus, we train. Call CCI,
1-609-478-6860.

WE'LL PAY YOU to type
names and addresses from
home. \$500.00 per 1000.
Call 1-900-896-1666
(\$1.49 min/18hrs.+) or
Write: PASSE - F6737,
161 S. Lincolnway, N.
Aurora, IL 60542

GENERAL OPPORS.

TEACHER ASSISTANTS Full & Part-time

Clara Maass Medical
Center, a 475-bed acute
care facility located in
suburban Belleville, NJ,
currently has excellent
full-time and part-time
positions available for
Teacher Assistants at our
growing on-site educa-
tional day care center.
Previous experience
preferred.

Please call or send resume
to Deborah L. Patti,
Human Resources
Recruiter at (201)
450-2117, Clara Maass
Medical Center, One
Franklin Avenue,
Belleville, NJ 07109.
An EOE/AA.



MEDICAL

Managed Health Care
Co. seeks F/T medical
personnel for Co. located
in Belleville. Medical ter-
minology & computer exp
a plus. Call 759-6965 for
interview

OFFICE HELP NEEDED
for busy Chiropractor
Call 678-6370

PART-TIME HELP

3 Counter Positions, 9-3
Some Exp. Nec. 10-2 &
3-8, will Train. Apply in
Person Only. Sub King,
236 Franklin Ave. Nutley

Highly Motivated Person
to work 12 hrs. per week
in Chiropractic Off.
Duties Inc. Data Entry,
Clerical, Ans. Phones and
interfacing with patients.
Call 338-5577

Waitress Day or Even.
Shift. Exp. Only. Apply in
person. The Stack 205
River Rd., No. Arlington

Dial 667-3000
to call in your
Classified ad

PARTS ACCESSORIES SERVICES

PARTS ACCESSORIES SERVICES



ATTENTION!
AUTO PARTS

WILL PAY CASH FOR ANY JUNK
CAR IN ANY CONDITION

Highest prices paid for late models.

USED CARS & TRUCKS

USED
PARTS

991-4246 or 991-0081
54 Stover Ave., Kearns

USED
PARTS

AUTO SALES

1987 Chevrolet Cavalier
Station Wagon. 42,000
miles, A/C, radio. Good
working cond. One owner.
\$6500 or B/O. 667-5612

FREE REMOVAL OF
JUNK CARS
24 HR SERV
CALL TWIN TOWING
751-8430

'83 Buick Regal 67,000
mi. Gd. Run. Cond. Will
Sacrifice \$1,500 or B/O
Call Alt. 5PM 759-9014

AUTO WRECKERS

JUNK CARS WANTED
*Free Tow-Away
*Same Day Pick-Up
(In Most Cases)
S.O.S. TOWING, INC.
429-8471 Bloomfield
481-2610 Newark

ANNOUNCE- MENTS

WIN CASH & OTHER
GREAT PRIZES. Cars,
boats, Exotic Vacations.
Enter Hundreds of
sweepstakes & contests
Absolutely FREE!
Recorded message gives
details.
CALL 1-800-330-5519

GENERAL NOTICES

SWEDIS BOY 17,
anxiously awaiting host
family. Enjoys sports,
reading and computers.
Other Scandinavian,
European high school stu-
dents arriving August.
Call KATHLEEN (908)
389-3346 OR 1-800-Sib-
ling

HOME HEALTH CARE

HOME HEALTH CARE
Loving Hands Health
Care Agency is in need of
a Director of Operations
for our new office in
Bloomfield. Experience in
home care, a medical
background and a friendly
personality is necessary.
Please call Laurie for
an appointment at
201-265-3523.

EMPLOYMENT

Deli Counter help
Evenings and Saturday
16 years or older
Call 284-0855

Machinist w/centerless
grinding exp. Must know
screw captivation proc.
Send resume to ASMCO
PO Box 271 Nutley N.J.
07110 Attn: Tony

WAREHOUSE HELP
\$7.00 per hr, pick orders,
shrink wrap pallets, &
operate forklift, some
warehouse exp. pref. Must
be good with figures.
Full bnfts.

VAN NISS PLASTICS
555 CORTLANDT ST.
BELLEVILLE

DOMESTIC

WANTED - Someone to
clean 3 hours a week,
afternoons in Nutley
Call 667-4477

SECRETARY

Medical Legal Office
Seeks Sec. Receptionist
with communication and
comp. skills to assist in
operations. Medical
claims, Nursing exp. a +.
Salary neg. Contact Glen
Gromann at 775-7030.

Sml Belleville Law Firm
wants Mature, Energetic
Reliable Secy. With
Knowledge of WorkStar;
Legal experience helpful
but not necessary.
Call Lila 759-4700

GENERAL OPPORS.

*MODELS*SINGERS
*DANCERS*KIDS*
TEENS*TWENTIES*
*COVER GIRL
STUDIO*
261-2042 LicBWO 193200
River Edge

ALL PHASE
EMPLOYMENT
SERVICE
382 Franklin Ave.
Nutley, N. J.
661-W-O-R-K
997-W-O-R-K

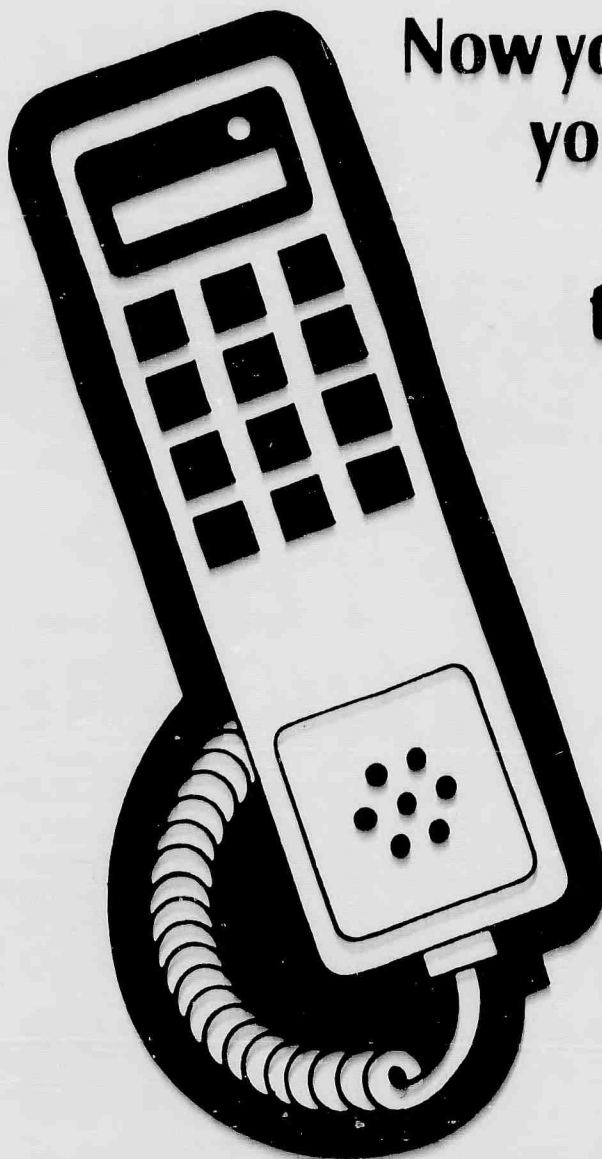
Permanent & Temporary
F/T & P/T positions
Vacation Plan

AVON SALES
representative
needed F/T - P/T. All
areas.

Call Carla
1-800-395-3383

Beautician Wanted
If your looking for a
change & have a
following, we're the salon
for you. You can make
your own hours.
Call Jill at 748-4931

Dental Asst. P/T
Tues, Thurs, Fri. 8-5
Montclair off. X-Ray Lic.
Call 403-8907



Now you can phone in
your classified ad
and charge it
to your VISA or
MasterCard
account



Call **667-3000**

Give us the copy for your ad and
your VISA or MasterCard account number

It's as easy as that!

The deadline is noon Tuesday for that week's issue,
but the best times to call are Thursdays and Fridays.

Orechio Publications

800 Bloomfield Ave. Nutley, N.J. 07110
The Nutley Sun, Belleville Times, Bloomfield Life

BUSINESS OPPORTS.

MEDICAL BILLING
EMC-America electronic insurance claims processing for medical practitioners. \$30,000 parttime to over \$80,000 fulltime. Investment \$5950 plus PC. For information by mail call (816) 283-9975.

!!TAVERN!!

Belleville (Silver Lake) Well estab. business. Long term lease w/low rental. Owner financing. Asking \$85,000 w/option to buy property & business \$165,000.
Hurry - Won't Last!!
D. Paul Lettini
R.E. Broker 450-8121
Eves. 450-0958

!Luncheonette

\$80's
!Catering & Lottery!
Belleville (Washington Ave.) Approx. \$4,800 per wk. gross without lottery. Long term lease. Pkng. Hurry-Won't Last!!
D. Paul Lettini
R.E. Broker 450-8121
Eves. 450-0958

AUTO REPAIR SHOP!

Newark (Verona Ave.) Rent with option to buy. Fully Equipped. 2 Bays. Exc. Lease & Terms!! Great opportunity for Go-Getter!!
D. Paul Lettini
R.E. Broker 450-8121
Eves. 450-0958

DELI & PROPERTY

Belleville (Washington Ave.) includes beautiful 6 rm apt. Parking. Good gross w/additional growth potential!! Asking \$300,000, but owner is motivated!!
D. Paul Lettini
R.E. Broker 450-8121
Eves. 450-0958

INSTRUCTION

GUITAR LESSONS
PLEASE CALL BRIAN
759-2302

LEARN THE "WET ON WET" oil painting technique by certified Bob Ross instructor Rosie Tesla. All supplies included. Mon, Tues or Wed eves. Kids & adults welcome. Classes begin Jan. 25. Call today, space is limited. 751-6341**COMPUTERS**

Leading Edge -20MB-HDD 5 1/4 floppy w/kybd Ctr TV mtr. Wide carr. Dot Matrix pmt. Mint Condition \$800
338-1522 338-5377

ARTICLES FOR SALE

ATARI 2600 TAPES
\$2.00 EACH. CALL
201-667-8565
AFTER 6:00PM

ARTICLES FOR SALE

Electric hospital bed & mattress & trapeze. Excl cond. \$150. for all. 667-6083

Leaded Glass for Sale
2 gorgeous Table Lamps. Marble bases. 1 Oblong, 2 Round Chandeliers. Others!
997-5114

Looking for ANNALEE DOLLS from the 50's and 60's. Please call 1-899-433-6557. Ask for LAURA

WANTED

Used Air Conditioners CASH!!
482-3681

WOLFF TANNING BEDS
New Commercial-Home Units From \$199.00. Lamps - Lotions - Accessories. Monthly Payments Low As \$18.00. Call Today FREE NEW Color Catalog
1-800-228-6292

ARTICLES WANTED

I'M BUYING TOOLS
*Old *New *Used
*Any Type *Any Quantity
CALL "GENE"
696-4988 4-6 PM
weekdays
After 6:30 PM weekends.

Licensed Gun Collector
Cash for:
*Guns *Swords *Daggers
*Bayonets
*Military Items
Registered Appraiser
CALL 783-6145

LIONEL AND OTHER TRAINS

COLLECTOR
PAYS TOP PRICE
CALL 201-334-8709 or
201-635-2058

WANTED Old-Antique Rugs from 60 yrs. to 100 yrs. Get paid promptly. If you have any questions, Call 1-800-541-4488
S.O.R.G. GUARANTEED FAIR PRICES.

FURNITURE

*Used Filing Cabinets
*Chairs *Desks
EDELSTEIN OFFICE FURNITURE WISE.
946 Market St.-Paterson
Cor.Lakeview Ave. & R180
523-6153

Antique oak furniture, dresser, chest, wash stand, wardrobe, china curio cabinet, dining room, brass bed, large knee old desk & side chairs. 667-0303/857-3114

FOR SALE

Blonde formica corner hutch. Drawers & shelves. Glass doors. Great for extra storage. Good condition. Reasonable! Call 483-7623 after 12 noon

FURNITURE**FOR SALE!!**

2 wood trimmed, high back fireside chairs. Melon velvet.
Excellent Condition!
\$150. takes the pair, but willing to separate.
Call Michelle at
748-8729 aft. 6pm

MOVING SALE

Furniture-Triples
Dresser, Ngt Stands, Mirrors, Hdbrd. Sofa, L-Seat, Dinette & More!
1/16 9-3 1/17 10-3
181 River Rd. Nutley
Bdg 3-Apt 4D 667-0533

GARAGE SALES

Pre-Inventary 1/2 off clearance sale. Overstocked items. Gifts, jewelry, dishes, kitchen gadgets, dolls, Christmas stuff. Also Tango scenes of Montclair. Thurs Jan 7 thru 16.
Ellie's Closet, 43 Church St., Montclair. 744-3055

REAL ESTATE

Equal Housing Opportunity
All real estate advertised herein is subject to the Federal Fair Housing Act of 1968 which makes it illegal to advertise "any preference, limitation, or discrimination based on race, color, religion, sex, national origin, familial status, or handicap, or intention to make any such preferences, limitation, or discrimination"

EQUAL HOUSING OPPORTUNITY**REAL ESTATE****FOR SALE!!**

2 wood trimmed, high back fireside chairs. Melon velvet.
Excellent Condition!
\$150. takes the pair, but willing to separate.
Call Michelle at
748-8729 aft. 6pm

MOVING SALE

Furniture-Triples
Dresser, Ngt Stands, Mirrors, Hdbrd. Sofa, L-Seat, Dinette & More!
1/16 9-3 1/17 10-3
181 River Rd. Nutley
Bdg 3-Apt 4D 667-0533

GARAGE SALES

Pre-Inventary 1/2 off clearance sale. Overstocked items. Gifts, jewelry, dishes, kitchen gadgets, dolls, Christmas stuff. Also Tango scenes of Montclair. Thurs Jan 7 thru 16.
Ellie's Closet, 43 Church St., Montclair. 744-3055

REAL ESTATE**FOR SALE!!**

2 wood trimmed, high back fireside chairs. Melon velvet.
Excellent Condition!
\$150. takes the pair, but willing to separate.
Call Michelle at
748-8729 aft. 6pm

MOVING SALE

Furniture-Triples
Dresser, Ngt Stands, Mirrors, Hdbrd. Sofa, L-Seat, Dinette & More!
1/16 9-3 1/17 10-3
181 River Rd. Nutley
Bdg 3-Apt 4D 667-0533

GARAGE SALES

Pre-Inventary 1/2 off clearance sale. Overstocked items. Gifts, jewelry, dishes, kitchen gadgets, dolls, Christmas stuff. Also Tango scenes of Montclair. Thurs Jan 7 thru 16.
Ellie's Closet, 43 Church St., Montclair. 744-3055

REAL ESTATE**FOR SALE!!**

2 wood trimmed, high back fireside chairs. Melon velvet.
Excellent Condition!
\$150. takes the pair, but willing to separate.
Call Michelle at
748-8729 aft. 6pm

MOVING SALE

Furniture-Triples
Dresser, Ngt Stands, Mirrors, Hdbrd. Sofa, L-Seat, Dinette & More!
1/16 9-3 1/17 10-3
181 River Rd. Nutley
Bdg 3-Apt 4D 667-0533

GARAGE SALES

Pre-Inventary 1/2 off clearance sale. Overstocked items. Gifts, jewelry, dishes, kitchen gadgets, dolls, Christmas stuff. Also Tango scenes of Montclair. Thurs Jan 7 thru 16.
Ellie's Closet, 43 Church St., Montclair. 744-3055

REAL ESTATE**FOR SALE!!**

2 wood trimmed, high back fireside chairs. Melon velvet.
Excellent Condition!
\$150. takes the pair, but willing to separate.
Call Michelle at
748-8729 aft. 6pm

MOVING SALE

Furniture-Triples
Dresser, Ngt Stands, Mirrors, Hdbrd. Sofa, L-Seat, Dinette & More!
1/16 9-3 1/17 10-3
181 River Rd. Nutley
Bdg 3-Apt 4D 667-0533

GARAGE SALES

Pre-Inventary 1/2 off clearance sale. Overstocked items. Gifts, jewelry, dishes, kitchen gadgets, dolls, Christmas stuff. Also Tango scenes of Montclair. Thurs Jan 7 thru 16.
Ellie's Closet, 43 Church St., Montclair. 744-3055

REAL ESTATE**FOR SALE!!**

2 wood trimmed, high back fireside chairs. Melon velvet.
Excellent Condition!
\$150. takes the pair, but willing to separate.
Call Michelle at
748-8729 aft. 6pm

MOVING SALE

Furniture-Triples
Dresser, Ngt Stands, Mirrors, Hdbrd. Sofa, L-Seat, Dinette & More!
1/16 9-3 1/17 10-3
181 River Rd. Nutley
Bdg 3-Apt 4D 667-0533

GARAGE SALES

Pre-Inventary 1/2 off clearance sale. Overstocked items. Gifts, jewelry, dishes, kitchen gadgets, dolls, Christmas stuff. Also Tango scenes of Montclair. Thurs Jan 7 thru 16.
Ellie's Closet, 43 Church St., Montclair. 744-3055

REAL ESTATE**FOR SALE!!**

2 wood trimmed, high back fireside chairs. Melon velvet.
Excellent Condition!
\$150. takes the pair, but willing to separate.
Call Michelle at
748-8729 aft. 6pm

HOUSES FOR SALE**BELLEVILLE**

OPEN HOUSE
SUN. 1-3 P.M.
263 HORNBLLOWER AVENUE
Totally updated 2 family. 3 rms on 1st, 4 on 2nd, 2 lg mod BRS on 3rd, 2 gas units. Fenced in neatly landscaped yard.
\$165,000. Broker:
JIANCOX REALTY
667-9115

BELLEVILLE

2 Fam-\$172,900
26 Hornblower Ave.
6 & 6, 3 fin. rms on 3rd fl., sep. heating units, alum. siding, 2 car gar. Immaculate. Must See!!
D. Paul Lettini
R.E. Broker 450-8121
Eves. 450-0958

Belleville - Open House
Sun, 1-4 P.M. 195 Holmes St. 3 BR Cel. \$148K.
Call 450-9451

BLOOMFIELD

NEW LISTING
RANCH on oversized lot! "BARRIER FREE" 3 BRS, all level entries, wide doors! Just red. \$180's. Owner holds NJRE.

3 FAM. A-1 cond. Lg fenced prop. 2 car gar. Near school, trans & highways - great loc! \$230's. Call for details.
REALTOR:
RECORDS REALTY
3 High St., Nutley
667-5500

NUTLEY

1 Fam in 2 Fam Zone. Check out 56 Union Av. Cent. Air & Gas Heat Broker Owned
Davey Agency 667-7799

NUTLEY

COL. 4 BRS. 2 1/2 baths, lg rms, rear encl porch, rec rm. A-1 cond! 50 x 150 lot. Near school, trans & stores. \$190's - make an offer!
LG HOME, Spring Grdn area. 5 BRS. 2 1/2 baths, den, rec rm, fam rm; 2 car gar, on lg corner lot. \$300's. One of a kind!
REALTOR:
RECORDS REALTY
3 High St., Nutley
667-5500

NUTLEY-SPRING GARDEN

8 rm col. 4 BR, FDR, 1 1/2 bth. fam rm, appl. incl. \$189,000. 667-0162

NUTLEY FOR SALE

\$140's
CAPE Yantacaw School Fin bsmt, C/A, Fncd Yd COLONIAL - Washington School
Deep Lot 1 1/2 Baths. Both ready for immed occp, call for details
FIRST CENTURY
REALTOR 235-0440

OPEN TO OFFERS

BELLEVILLE
101 FOREST ST.
BRICK SPLIT LEVEL - 4 BRS, mod kit, din area, LR, lg Florida rm, fin bsmt w/powder rm, summer kit & bar. Reduced-\$160,000.
PILGRIM REALTY
759-3349

OPEN TO OFFERS

BELLEVILLE
101 FOREST ST.
BRICK SPLIT LEVEL - 4 BRS, mod kit, din area, LR, lg Florida rm, fin bsmt w/powder rm, summer kit & bar. Reduced-\$160,000.
PILGRIM REALTY
759-3349

OPEN TO OFFERS

BELLEVILLE
101 FOREST ST.
BRICK SPLIT LEVEL - 4 BRS, mod kit, din area, LR, lg Florida rm, fin bsmt w/powder rm, summer kit & bar. Reduced-\$160,000.
PILGRIM REALTY
759-3349

OPEN TO OFFERS

BELLEVILLE
101 FOREST ST.
BRICK SPLIT LEVEL - 4 BRS, mod kit, din area, LR, lg Florida rm, fin bsmt w/powder rm, summer kit & bar. Reduced-\$160,000.
PILGRIM REALTY
759-3349

OPEN TO OFFERS

BELLEVILLE
101 FOREST ST.
BRICK SPLIT LEVEL - 4 BRS, mod kit, din area, LR, lg Florida rm, fin bsmt w/powder rm, summer kit & bar. Reduced-\$160,000.
PILGRIM REALTY
759-3349

OPEN TO OFFERS

BELLEVILLE
101 FOREST ST.
BRICK SPLIT LEVEL - 4 BRS, mod kit, din area, LR, lg Florida rm, fin bsmt w/powder rm, summer kit & bar. Reduced-\$160,000.
PILGRIM REALTY
759-3349

OPEN TO OFFERS

BELLEVILLE
101 FOREST ST.
BRICK SPLIT LEVEL - 4 BRS, mod kit, din area, LR, lg Florida rm, fin bsmt w/powder rm, summer kit & bar. Reduced-\$160,000.
PILGRIM REALTY
759-3349

OPEN TO OFFERS

BELLEVILLE
101 FOREST ST.
BRICK SPLIT LEVEL - 4 BRS, mod kit, din area, LR, lg Florida rm, fin bsmt w/powder rm, summer kit & bar. Reduced-\$160,000.
PILGRIM REALTY
759-3349

OPEN TO OFFERS

BELLEVILLE
101 FOREST ST.
BRICK SPLIT LEVEL - 4 BRS, mod kit, din area, LR, lg Florida rm, fin bsmt w/powder rm, summer kit & bar. Reduced-\$160,000.
PILGRIM REALTY
759-3349

OPEN TO OFFERS

BELLEVILLE
101 FOREST ST.
BRICK SPLIT LEVEL - 4 BRS, mod kit, din area, LR, lg Florida rm, fin bsmt w/powder rm, summer kit & bar. Reduced-\$160,000.
PILGRIM REALTY
759-3349

OPEN TO OFFERS

BELLEVILLE
101 FOREST ST.
BRICK SPLIT LEVEL - 4 BRS, mod kit, din area, LR, lg Florida rm, fin bsmt w/powder rm, summer kit & bar. Reduced-\$160,000.
PILGRIM REALTY
759-3349

OPEN TO OFFERS

BELLEVILLE
101 FOREST ST.
BRICK SPLIT LEVEL - 4 BRS, mod kit, din area, LR, lg Florida rm, fin bsmt w/powder rm, summer kit & bar. Reduced-\$160,000.
PILGRIM REALTY
759-3349

OPEN TO OFFERS

BELLEVILLE
101 FOREST ST.
BRICK SPLIT LEVEL - 4 BRS, mod kit, din area, LR, lg Florida rm, fin bsmt w/powder rm, summer kit & bar. Reduced-\$160,000.
PILGRIM REALTY
759-3349

HOUSES FOR SALE**PARKERTON - OVERSIZED RANCHER**

Showcase home on quiet cul-de-sac in truly in mint condition. 3 bedrooms, 2.5 baths, 2 car garage, in-ground pool, patio, plus. Only \$149,900. G. ANDERSON AGENCY REALTORS
1-800-444-8507

INDUSTRIAL & COMMERCIAL

Belleville
Excellent Terms
Office & Warehouse
Space. 3,000 to 40,000 sq. ft.
10 Minutes to Lincoln Tunnel
201-751-0400

BLOOMFIELD

Double storefront building in center of town. Excellent retail/office. Renovated. Priced to sell at \$149,900.
★ ★ MARZULLI ★ ★
Realtor 743-2306

BUILDING FOR RENT

approx. 2,000 ft. equip with overhead door, & office space suitable for light manufacturing, or small business, 1 blk from NY & NJ buses, principles only
Call 235-1879 after 5pm.

TOWNHOUSES FOR SALE

Nice Area of Belleville features 3 BR, 3 Baths, Owner Relocating
Anxious
GRACIOUS LIVING
REAL ESTATE 759-6699

APARTMENTS UNFURNISHED

2 BR / Modern Kitchen \$650.00 mo. + util.
\$725. per mo. H/H/W incl. Avail immed 680-1513

BLOOMFIELD-6 rms.

1 bth, 1 Gar, Sep H/H/W, immed occup. NY & other transp. \$785. per mo. R. Marashlian Owner/ Broker 808-5240

Bloomfield Broad Str.

2 Rm. H/H/W sup. Adults No Pets. \$495 month
748-8363

Bloomfield

Location & Value
3 1/2 rms, spotless, w/new kit & new appl, newly fin hardwood floors, great closets. H/H/W incl. On site laundry, well maint, trans to NY & all conveniences at front door.
Call 743-7261

Bloomfield-1 BR, 3 fam.

h/h/w incl. \$590. per mo. Call aft 5. 338-7357

Bloomfield

Nice 1 BR apt in 3 fam house. Great loc. Pkng incl. \$550. Call 661-3816

Bloomfield - 4 immac rms.

Avail. Feb 1. \$700 h/h/w incl. Res area, private drive. Call 201-680-1050

Bloomfield

3 1/2 mod rms. \$625 H/H/W incl. Grdn apt, prkng, laund, ac. Avail 2/1.
★ ★ MARZULLI ★ ★
Realtor 743-2306

Bloomfield

5 rms, 2 BRS, laund, gar. Avail immed. \$700 incl heat.
★ ★ MARZULLI ★ ★
Realtor 743-2306

Bloomfield

5 rms, 2 BRS, laund, gar. Avail immed. \$700 incl heat.
★ ★ MARZULLI ★ ★
Realtor 743-2306

Bloomfield

5 rms, 2 BRS, laund, gar. Avail immed. \$700 incl heat.
★ ★ MARZULLI ★ ★
Realtor 743-2306

Bloomfield

5 rms, 2 BRS, laund, gar. Avail immed. \$700 incl heat.
★ ★ MARZULLI ★ ★
Realtor 743-2306

Bloomfield

5 rms, 2 BRS, laund, gar. Avail immed. \$700 incl heat.
★ ★ MARZULLI ★ ★
Realtor 743-2306

Bloomfield

5 rms, 2 BRS, laund, gar. Avail immed. \$700 incl heat.
★ ★ MARZULLI ★ ★
Realtor 743-2306

Bloomfield

5 rms, 2 BRS, laund, gar. Avail immed. \$700 incl heat.
★ ★ MARZULLI ★ ★
Realtor 743-2306

Bloomfield

5 rms, 2 BRS, laund, gar. Avail immed. \$700 incl heat.
★ ★ MARZULLI ★ ★
Realtor 743-2306

Bloomfield

5 rms, 2 BRS, laund, gar. Avail immed. \$700 incl heat.
★ ★ MARZULLI ★ ★
Realtor 743-2306

APARTMENTS UNFURNISHED**BELLEVILLE**

3 mod. rms, 3rd flr, h/h/w incl \$425.
4 rms., 2nd flr.
Supply own util. \$550.
5 1/2 lg rms, 2nd flr.
H/H/W incl. \$800.

BLOOMFIELD

3 1/2 rms, 3rd flr., All util. incl. \$550.
5 lg. rms., 2nd flr.
Heat supplied \$725.
NUTLEY
5 lg rms., 1st flr.
Supply own util. \$725.
3 1/2 rms, 2nd flr. Supply own util. \$525.

METRO AGENCY REALTOR</



We Save You *more* MONEY With Our 1993... Can Can Sale!

Maxwell House
MASTER BLEND
AUTOMATIC DRIP (EXCEPT DECAF)
Master Blend Ground Coffee
CASE OF 24
21.36
11-oz. can **.89**

Hi-C Fruit Drinks
SELECTED VARIETIES
CASE OF 12
5.88
1 qt. 14-oz. can **.49**

Contadina Tomato Sauce
WHY PAY MORE
CASE OF 48
5.34
8-oz. cans **9 100**

24 Pk. Coke or Sprite
SUN. JAN. 10 THRU SAT. JAN. 16, 1993
ShopRite Sale Price **4.99** YOU PAY ONLY **3.99**
LESS PRICE PLUS club Discount **-1.00**

REG. OR SPECIAL REQUEST
Campbell's Tomato Soup 10 1/2-oz. cans **4 99**

SOLID PACK, IN OIL OR WATER
Bumble Bee White Tuna 6 1/2-oz. cans **4 49**

CRUSHED, PUREE OR SAUCE
Tuttorosso Tomatoes 1-lb. 12-oz. can **.49**

REGULAR OR LITE
Del Monte Fruit Cocktail 1-lb. 13-oz. can **.99**

REG. OR NO SALT ADDED
PIECES & STEMS
ShopRite Mushrooms 4-oz. cans **4 199**

20-QUART YIELD
Lipton Iced Tea Mix 4-lb. can **2 99**

WHY PAY MORE™
ShopRite Beef Ravioli 2-lb. 8-oz. can **.99**

WHY PAY MORE™
Rienzi White Clam Sauce 15-oz. can **.99**

SEL. VAR., READY TO SPREAD
Betty Crocker Frostings 1-lb. can **.99**

WHY PAY MORE™
Bertolli Olive Oil 3-qt., 5-oz. can **6 99**

IN OIL OR WATER
Bumble Bee Chunk Light Tuna 6 1/2-oz. cans **4 199**

WHY PAY MORE™
Bumble Bee Pink Salmon 14 1/2-oz. can **1 79**

WHY PAY MORE™
ShopRite Pineapple Juice 1-qt. 14-oz. can **.89**

ShopRite HALVES OR SLICED
Bartlett Pears 1-lb. 13-oz. can **.89**

CHUNK, SLICED OR CRUSHED
IN NATURAL JUICE
Golden Value Pineapple 1-lb. 4-oz. cans **4 199**

WHY PAY MORE™
Del Monte Raisins 1-lb. 8-oz. canister **1 99**

ITALIAN STYLE
Tuttorosso Tomatoes 2-lb. 3-oz. can **.69**

WHY PAY MORE™
Argo Spinach 15-oz. cans **3 100**

ORIG. OR SPECIAL REQUEST
SOUP 1/2 LESS SALT
Campbell's Chicken Noodle 10 1/2-oz. cans **5 200**

WHY PAY MORE™
ShopRite Chicken Broth 13 1/2-oz. cans **4 99**

WHY PAY MORE™
Campbell's Pork & Beans 1-lb. cans **3 100**

SLICED OR DICED CARROTS OR
ShopRite Mixed Vegetables 1-lb. cans **3 100**

PLUS DEP. WHERE REQ.
C & C Seltzer 6-pack 12-oz. cans **.79**

SELECTED VARIETIES
Plus Dep. Where Req.
C & C Soda 6-pack 12-oz. cans **.99**

WHY PAY MORE™
ShopRite Tomato Sauce 1-lb. 12-oz. can **.59**

ShopRite BITE SIZE CHEESE OR
BEEF RAVIOLI OR
Spaghetti With Meatballs 15-oz. cans **4 199**

REG. OR NO SALT ADDED,
WHOLE OR SLICED
ShopRite White Potatoes 1-lb. cans **3 100**

WHY PAY MORE™
Garden of Eatin' Sweet ShopRite Peas 1-lb. cans **4 99**

PINTO, GARBANZO OR RED
OR DARK RED
Green Giant Kidney Beans 15.5-oz. cans **3 100**

FRENCH OR CUT GREEN BEANS, WHOLE KERNEL
CORN (REG. OR NO SALT ADDED) OR PEAS
Del Monte Vegetables CASE OF 12 16 to 17-oz. cans **3 99**

SMALL WHOLE, CUT
OR SLICED
ShopRite Beets 1-lb. cans **3 100**

REGULAR OR NATURAL
ShopRite Apple Sauce 1-lb. cans **3 100**

ShopRite FRUIT COCKTAIL IN HEAVY
SYRUP OR HALVES OR SLICES IN JUICE
Yellow Cling Peaches CASE OF 6 16-oz. cans **3 99**

SELECTED VARIETIES
Alpo Dog Food 14-oz. cans **6 299**

SELECTED VARIETIES
9 Lives Cat Food 5 1/2-oz. cans **9 199**

SELECTED VARIETIES
Skippy Dog Food 14-oz. cans **3 100**

WE SAVE YOU *more* MONEY...

LYSON HOLLY FARMS
Whole Fryers 5-7 LBS. AVG. W/POP-UP TIMER
U.S.D.A. GRADE
.69 **.49** 1/2 PRICE

Oven Stuffer Perdue Roaster
U.S.D.A. GRADE
lb. **.99**

REGULAR OR HOMESTYLE
Tropicana Pure Premium Orange Juice
1 99

STORE SLICED IN THE APPY
Virginia Brand Ham WATER ADDED lb. **3 49**

ShopRite Coupon
1-LB. BAG
ShopRite Walnuts In Shell
1 29
With This Coupon. Limit one per family. Good at any ShopRite. Sun., Jan. 10 thru Sat., Jan. 16, 1993. SAVE .20

BONELESS BEEF
Shoulder London Broil
USDA CHOICE
1 99 SAVE 1.80 PER LB.

SHADY BROOK
Fresh Ground Turkey
ShopRite Sale Price **1 89** YOU SAVE AN ADDITIONAL **.50**

WHY PAY MORE
Armour Sliced Bacon
1/2 PRICE **.99**

CLEANED, 2-4 LB. AVG. SIZE
Fresh Whole Salmon lb. **3 99**

9AB9 VALUABLE COUPON (MFR)
Lipton Rice or Noodles & Sauce
3 198 FOR
0 016110 5 SAVE .99

U.S. #1
Eastern Potatoes
20 lb. bag **1 99**

LOW IN CALORIES, 10-OZ. PKG.
Fresh Mushrooms
ShopRite Sale Price **1.29** YOU PAY ONLY **.99**
LESS PRICE PLUS club Discount **-.30**

SUN. JAN. 10 THRU SAT. JAN. 16, 1993
ShopRite White Bread
ShopRite Sale Price **.66** YOU PAY ONLY **.49**
LESS PRICE PLUS club Discount **-.17**

SEL. VAR. FROZEN YOGURT OR
Flavor King Ice Cream 1/2-gal. cont. **.99**

9AB9 VALUABLE COUPON (MFR)
Lipton Golden Sauté
3 198 FOR
0 016130 9 SAVE .99

VITAMIN 'C'
Florida Strawberries
1 qt. cont. **.99**

VITAMIN 'C', 88 SIZE
Sunkist Navel Oranges
Sunkist **5 for .99**

SUN. JAN. 10 THRU SAT. JAN. 16, 1993
12 Pk. Thomas' English Muffins
ShopRite Sale Price **2.58** YOU PAY ONLY **1 99**
LESS PRICE PLUS club Discount **-.59**

SELECTED VARIETIES, FROZEN
Weight Watchers Breakfasts 3 to 5-oz. pkg. **.89**

ShopRite Coupon
12-OZ. CANS REG., DIET OR CAFF. FREE
6 Pk. Pepsi Slice or Mt. Dew FOR **2 300**
(Plus Dep. Where Req.)
With This Coupon. Limit one per family. Good at any ShopRite. Sun., Jan. 10 thru Sat., Jan. 16, 1993. SAVE .50

Prices effective in N.J. North of Trenton (excl. Monticello, N.J.) including Kingston and E. Windsor, N.J. & Rockland & Richmond Co., N.Y. In order to assure a sufficient supply of sale items for all our customers, we must reserve the right to limit purchase to 4 of any sale items, except where otherwise noted. Not responsible for typographical errors. None sold to other retailers or wholesalers. Advertisers do not necessarily represent items on sale, it is for display purposes only. Sun. sales subject to local blue laws. PRICE PLUS: ITEMS LIMIT 4 DISCOUNTS PER ITEM, PER FLAVOR, PER VISIT. Copyright WAKEFERN FOOD CORP., 1993. Effective Sun., Jan. 10 thru Sat., Jan. 16, 1993.